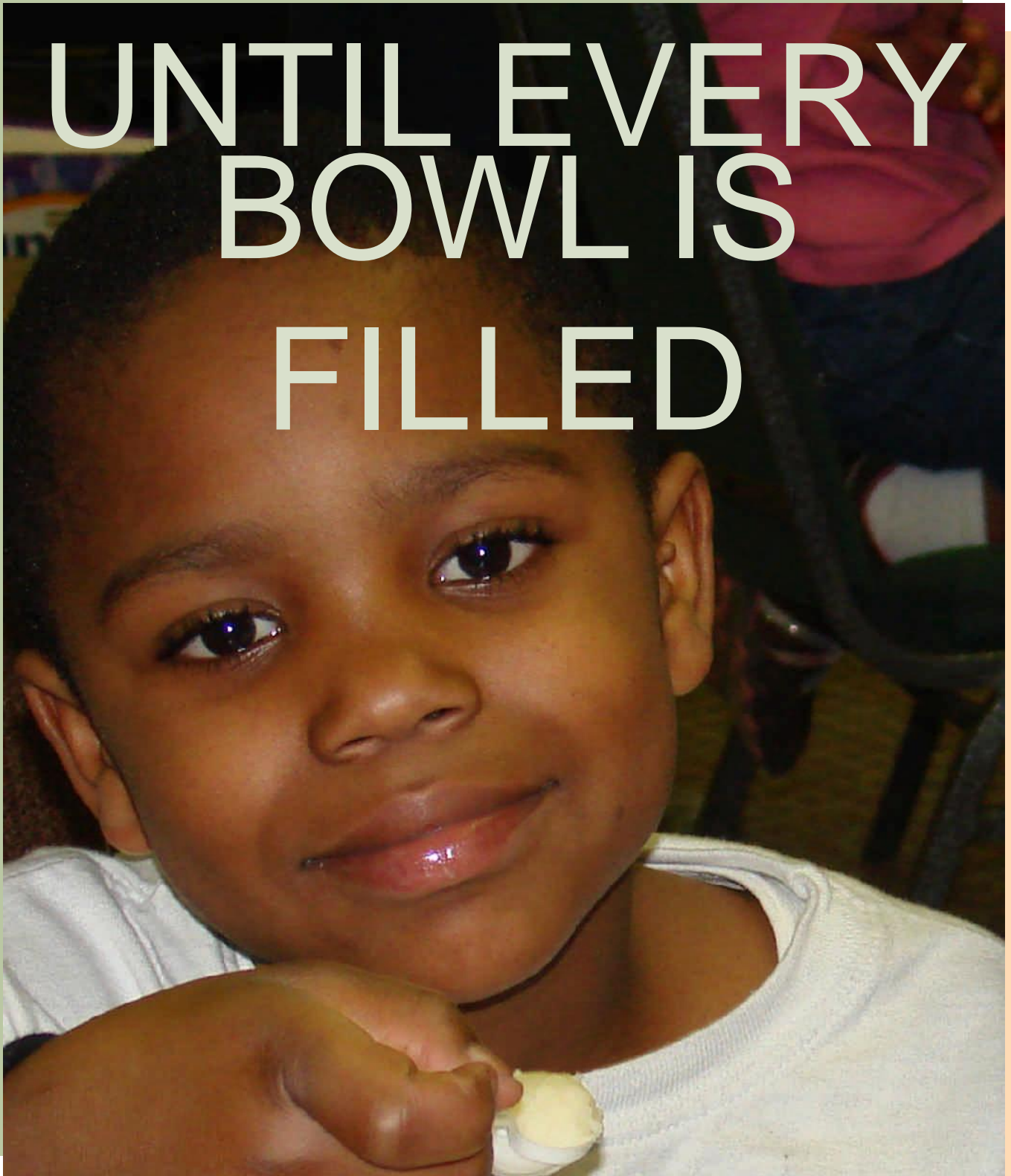




**GLEANERS**  
SERVING INDIANA'S HUNGRY

# UNTIL EVERY BOWL IS FILLED



Annual Report 2009- 2010



## MISSION

To end hunger by engaging individuals and communities to provide food for people in need.

Dear Friend of Gleaners,

Thank you so much for your steadfast partnership in the fight against hunger. In the midst of what continues to be the most challenging economic environment since the Great Depression, your compassion and generosity have provided a critical lifeline for over 160,000 of our most vulnerable neighbors - those who struggle with food insecurity and hunger, right here in Indiana.

# THANK YOU!

With so many Hoosiers out of work, poverty in Indiana is up significantly. Last fall, the U.S. Census Bureau released data showing that the poverty rate in Indiana jumped from 13% in 2008 to 14.4% in 2009. In just one year, over 90,000 more Hoosiers slipped into poverty. These trends have had a devastating impact on Hoosier children: one out of every five children in Indiana is now living in poverty; in Marion County, it's an astounding one out of every four.


While the economy has been very tough on the families who depend on us, we still have many things to be thankful for.

- Thanks to your generosity, Gleaners Food Bank was able to distribute 25.3 million pounds of food and critical grocery products in fiscal year 2010. That's the equivalent of 19 million meals for hungry Hoosiers.
- Your dedicated support has allowed us to continue to serve the people who depend on us the most: needy children and seniors. At the end of the 2009-2010 school year, our expanded BackSacks—Weekend Food for Kids program provided 3,050 food-insecure school kids with a sack of nutritious food for Saturday and Sunday, when they don't have access to school meals.
- Your generosity also allows us to continue our Share-a-Sack program in partnership with the Indiana State Department of Health, providing a 40-pound box of food to 4,000 food-insecure seniors every month.
- Your partnership has helped us continue to intensify our efforts to collect millions of pounds of additional food needed by hungry Hoosiers. In collaboration with our generous retail grocery partners—Jay C, Kroger, Marsh, Meijer, Sam's Club, Target, and Walmart—our trucks and drivers are on the road every weekday, collecting nutritious food from 137 grocery stores throughout our 21-county service area.
- On April 14—on the 30th anniversary of Gleaners' founding—the amazing generosity of partners like you allowed the food bank to move to a much larger and more efficient facility on the southwest side of Indianapolis. Our new home, the Rotary Club of Indianapolis Food Distribution Center, will help ensure the future of hunger relief in Indiana for many years to come. We're delighted to report that our capital campaign, under the leadership of Jim Morris, former Executive Director of the United Nations World Food Program, raised over \$12 million to make the new facility a reality.
- Prior to beginning operations at the new location, through the generosity of several donors and Feeding America, Gleaners received completely new information technology infrastructure, including the latest version of our enterprise software, specially customized for the Feeding America food bank network. This new platform will allow us to work seamlessly with our Feeding America colleagues on behalf of our charity partners and the people who depend on us for food.

Gratefully yours,

We are grateful to the 29,437 donors who gave to Gleaners during the past year. Hoosiers are truly generous and care about helping their fellow human beings and we thank you for support. Please remember that if not for you, a hunger-free Indiana would be an unrealizable ideal. Thanks to your generosity, we are working hard to translate that vision into a tangible reality. Please know that we will always treat your investment in our shared mission as the life-saving resource that it is.



  
Ronald E. Talbot  
Past Board Chair



  
Carrie Petty  
Current Board Chair

# THE NEED



## Hunger grows

By Rosalyn Demaree For Custom Publications

A 2009 study presented sobering facts about hunger in the 21 counties Gleaners serves. Demand at food pantries increased 46 percent during the recession. The number of people in poverty rose 18.6 percent — from 242,000 in 2008 to 287,000 in 2009. One in eight Hoosiers gets assistance from a food bank affiliated with Feeding America, the national food bank system that includes Gleaners. Some pantry volunteers even have become beneficiaries themselves.

“[Hunger] is right here at home,” according to Gleaners’s Chief Operating Officer Michael P. Miller. “It’s Joe and Jane Suburbia who’ve been out of work longer than they expected.”

Gleaners’ previous location, an 82,000-square-foot building on 16th Street, couldn’t keep up with rising demand. Its 12-million-pound capacity often meant workers had to triple-stack food. Navigating the site was like maneuvering a corn maze, Miller said. Three people were needed to move a pallet from one end to the other because the facility — actually nine connected buildings — occupied three levels.

The new, one-level building has raised Gleaners’ standard of operations. Pantry orders are laid out and ready for pick up at the docks or at a covered drive-through. With expanded freezer capacity, Gleaners was able to accept more donations from retailers who freeze fresh food before it expires. Miller acknowledges the building is larger than what’s now needed. But twice since the center opened last April, Gleaners was able to accept large government shipments that smaller-capacity food banks had to turn down.



## A Rich History

By Ashley Petry For Custom Publications

When Gleaners was founded 31 years ago, it was headquartered in a 3 1/2 car garage and maintained by a small group of dedicated volunteers. Last year, the organization distributed 25.3 million pounds of food, the equivalent of 19 million meals.

“It was a dream, that people needed to be fed, and it just grew and grew,” Hubert said.

As a food bank, Gleaners warehouses donated food and distributes it to food pantries and partner agencies in 21 counties. Those agencies — about 350 of them in central and southeastern Indiana — then pass the food along to people in need.

Having a central food bank is important, Hubert said, because major donors like Kroger, Walmart and Marsh prefer to deal with one agency rather than hundreds. Partner agencies also can “shop” the Gleaners inventory for what they need, rather than making do with whatever is donated.

Indiana has nine food banks affiliated with Feeding America, a high number for its population. The other eight were started by Gleaners to address hunger across the state efficiently.



# CAMPAIGN FOR GLEANERS

Dear Friend of Gleaners,

What an exciting year 2010 was! Just a few short years ago, when Gleaners identified the need for a larger and more efficient facility, community leaders formed a committee to spearhead a capital campaign. Once completed, "The Campaign for Gleaners" would allow the food bank to acquire a new facility to better meet the rapidly growing demand for food for Hoosiers in need.

Now, thanks to your generous pledges and gifts, the campaign raised has \$12,296,035 - exceeding its goal of \$11.6 million. And how could the campaign be anything but successful with supporters like the Lilly Endowment?! Their magnificent lead gift of \$3.5 million truly set the tone for the next three years of giving. In all, the campaign received nearly 8,500 pledges.

Here are a few of the ways your generosity is helping Gleaners feed more hungry Hoosiers:

- "The Campaign For Gleaners" allowed the food bank to purchase and relocate to a 297,000 square-foot warehouse located near the Indianapolis International Airport with three times the floor space of the antiquated and undersized former warehouse. The facility is located on a 17-acre site east of I-465 on the southwest side of Indianapolis.
- The warehouse has a spacious, safe and efficient production area where volunteers sort and box food for member agencies, fill bags with weekend food for children, and assemble food boxes for seniors.
- The state-of-the-art 35,000 square foot commercial refrigeration unit includes a freezer, cooler and fresh room that house precious fresh, perishable and frozen foods for Gleaners' member agencies.
- A two-lane drive through allows Gleaners to stage 32 agency orders at once along with seven distribution docks and six receiving docks.
- The warehouse also has four distribution bays that make it easier to accept donations, a wash bay, maintenance bays, interior truck storage space, locker rooms, a cafeteria, office space and up-to-date interior and exterior security systems.
- Because the new facility is located in an underserved area, Gleaners has opened a food pantry of its own. Less than a year later, the pantry is serving about 1,200 families each month.

All of this will significantly enhance Gleaners' ability to receive, handle and distribute the food and critical grocery products so desperately needed by our neighbors in need.

We are humbly grateful for the support of so many individual donors, families, companies, service organizations, and foundations throughout the communities we serve, which will allow Gleaners to continue to serve hungry Hoosiers throughout central and southeastern Indiana for decades to come.

Sincerely,



*Cynthia H. Hubert*

Cynthia H. Hubert  
President & CEO



# Generous Hoosiers drive capital campaign beyond the goal

By Nancee Reeves For Custom Publications

The success of Gleaners Food Bank's capital campaign is a credit to Indiana and to the hardworking, generous people who make the state great. "We have been humbled by unbelievable Hoosier generosity," said Jim Morris, campaign chair and president of Pacers Sports and Entertainment. "In these challenging economic times, Hoosiers have responded by making gifts that will not benefit them personally, but which will help fellow humans. Hoosiers are truly compassionate." Gleaners needed \$11.6 million to relocate to a larger building that would allow the organization to do more and serve people more efficiently. Instead, the campaign raised \$12.3 million.

"It's not true that people don't support charities during tough times," Morris said. "However, people do want to make sure that when they give money, they are giving it to something that is really important. And there is nothing more important than making sure children don't go hungry." According to Gleaners, one in four children in Marion County lives in poverty, and eight in 10 Indianapolis Public Schools students receive free or reduced-cost lunches. The nation's faltering economy only exacerbates this issue. That's a primary reason Gleaners launched the capital campaign — its first major campaign since the charity was founded in 1980.



**Jim Morris**  
Campaign Chair

## Blue Ribbon Committee

Volunteers are essential for a campaign of this magnitude. Since 2008, a blue ribbon committee of about 60 community leaders planned, prepared and raised funds to make the capital campaign a success. "The blue ribbon committee was brilliant," Morris said. "It was composed of business, religious and civic leaders — people from all walks of life working together." Through the concerted efforts of the committee and Gleaners staff, more than 8,500 donors supported the campaign. "Everyone on the blue ribbon committee is aware of what a very special experience this has been," Morris said. "It's not every day you get to make such an impact on the world."

### Richard G. Lugar

Honorary Committee Chair,  
United States Senate

### Bren Simon

Honorary Committee Chair  
& Philanthropist

### James T. Morris

Committee Chair, President,  
Pacers Sports & Entertainment

### Janie Maurer

Committee Co-Chair, Former  
Gleaners Board Member & Community Volunteer

### Mark D. Miles

Committee Co-Chair, President,  
Central Indiana Corporate Partnership, Inc.

### Dennis Bassett

Regional President,  
Chase Bank

### Karen K. Bohn

Nurse Practitioner,  
Clearvista Women's Care

### Michael E. Bosway

President and CEO,  
City Securities Corp.

### James W. Browning

VP-Development  
Browning Investments, Inc.

### Lance Chrisman

WellPoint Foundation & Social Responsibility,  
WellPoint, Inc.

### Brent Claymon

Principal, Park Place Motors

### Lori Efrogmson-Aguilera

Community Leader & Philanthropist,  
Efrogmson Fund of the CICF

### Claudette Einhorn

Former Gleaners Board Member  
and Community Volunteer

### William Enright

Director, The Lake Family Institute  
at the I.U. Center on Philanthropy

### Earl A. Goode

Chief of Staff to Governor,  
State of Indiana

### Brad Hastings

Senior VP of Business  
Development, Tippmann Group/  
Interstate Warehousing

### Robert R. Herzog

VP of Finance & Chief Financial Officer  
Educational Management Corporation  
Harrison College

### Ivan Douglas Hicks

Senior Pastor,  
First Baptist Church North

### Rick Hurst

President, N.K. Hurst Co., Inc.

### Kris Kellam Jernstedt

Community Volunteer

### Lacy M. Johnson

Partner, Ice Miller

### Catherine LaCrosse

Senior Vice President,  
National Wine & Spirits Corp.

### Michael J. Lee

Partner, Katz, Sapper & Miller LLP

### P.E. MacAllister

Chairman,  
MacAllister Machinery Company, Inc.

### H. Richard McFarland

President & Owner  
McFarland Foods Corp.

### Bill McGowan, Jr.

Vice Chair, Indianapolis  
Convention & Visitors Association

### Ted McKinney

Leader, Industry Relations & State Govt. Affairs,  
Dow AgroSciences

### M. Kent Millard

Senior Pastor, St. Luke's  
United Methodist Church

### David Miner

Chairman of the Board of  
Directors, Bread for the World

### Robert Moeder

President Central Division  
The Kroger Company

### Dayton H. Molendorp

Chairman, President & CEO  
OneAmerica

### Fred J. Nation

Executive VP of Communications,  
Indianapolis Motor Speedway

### Michael O'Connor

Principal, Bose Public  
Affairs Group

### Thomas J. O'Donnell

Business Manager  
IBEW Local 481

### Gregory W. Porter

Indiana State Representative District 96

### George Rapp

Retired, Orthopedic Surgeon

### Sandy Eisenberg Sasso

Rabbi, Congregation  
Beth-El Zedeck

### Joseph A. Slash

President & CEO  
Indianapolis Urban League

### Robert L. Smith

President, Eli Lilly &  
Company Foundation

### Stewart A. Stockdale

EVP-President U.S. & Canada,  
The Western Union Company

### Ronald E. Talbot

Senior Vice President,  
Indianapolis Power & Light Co.

### Jerry Williams

Taft Stettinius & Hollister LLP

# CAMPAIGN GIFTS

## Lilly Endowment Ensures the Future of Hunger Relief in Central and Southeastern Indiana for Many Years to Come

No funding partner has been more critical to the mission of Gleaners Food Bank than Lilly Endowment. Over the years, the Endowment has provided indispensable support to help Gleaners increase its organizational capacity. With the need for food assistance increasing dramatically during the early years of the new millennium, it was becoming ever more challenging—and costly—for Gleaners to operate out of its antiquated and much-too-small warehouse located at 1102 E. 16th Street on the near northeast side of Indianapolis.

In 2004 the Endowment provided generous support for a professional facility assessment that clearly documented the need for a larger, more efficient food distribution center to serve growing numbers of hungry Hoosier families. In addition, the people at Lilly Endowment provided backing for a fundraising feasibility study that concluded Gleaners is highly regarded in the community and there was wide-ranging support for a new facility.

Then—just as the Campaign for Gleaners was set to launch—the worst financial crisis since the Great Depression hit in September 2008. With unemployment rising precipitously, the need for a new food distribution center was more critical than ever, but would the community still support a capital campaign as asset values plunged?

Once again, Lilly Endowment responded splendidly to a critical community need and, in December 2008, provided a magnificent lead gift of \$3.5 million to the Campaign for Gleaners.

According to past Board Chair Brad Hastings, “It was Lilly Endowment’s marvelous lead gift that jumpstarted our campaign in the midst of a very challenging economy and ultimately ensured our success. Words cannot express how grateful we are for Lilly Endowment’s partnership upholding our shared vision of a hunger-free Indiana”.

### Leadership Gifts \$1,000,000+

Lilly Endowment, Inc.  
Anonymous  
Rotary Club of Indianapolis  
Melvin and Bren Simon Charitable  
Foundation #1

### Major Gifts \$150,000-\$999,999

Deem, LLC  
Efroymsen Family Fund, a CICF  
Fund  
Eli Lilly and Company  
Foundation, Inc.  
The Indianapolis Foundation, an  
Affiliate of CICF  
Indianapolis Power & Light Co.

### Special Gifts \$50,000-\$149,999

Defender Direct, Inc.  
Anonymous  
Anonymous  
JPMorgan Chase  
The Kroger Company  
M&I Marshall & Ilsley Bank  
James T. and Jackie Morris  
R. B. Annis Educational  
Foundation  
Samerian Foundation  
Second Presbyterian Church

### Supporting Gifts \$1,000-\$49,999

Jonathan F. and Sandra C. Adland  
The Ackerman Foundation  
Dan and Pamela Alvey  
Anheuser-Busch InBev  
Arthur Jordan Foundation  
AT&T Indiana  
AXIA Technology Partners  
Annette L. Baker  
Mark J. Baker and Robert G. Wilson  
Barnes & Thornburg LLP  
Barth Electric Co., Inc.  
Michael and Kathleen Barth, III  
Constance K. Bash  
Dennis Bassett  
Phillip L. and Bonnie Bayt  
Gregory and Jill Beyerl  
Biglari Foundation  
Mark and Peggy Blackard  
The Jean Blackwell and Kim  
Williams Fund, a fund of The  
Indianapolis Foundation  
Eleanor Bookwalter  
Brian C. and Cheryl H. Bosma  
Robert Terry Bowen  
Anonymous  
John Brehob  
Brightpoint, Inc.

Mark Bromund  
Browning Investments, Inc.  
Jamie and Liz Browning  
Anonymous  
Marilyn C. Burger  
Lance R. Chrisman  
City Securities Corporation  
Tracy and Bobbi Clay  
Brent and Sarah Claymon  
Foundation  
Coca-Cola Bottling Co.  
Cornelius Family Foundation, Inc.  
CSO Architects  
Pamela Cutcliff  
David M. Cook Foundation, Inc.  
DAST Foundation  
Andrea Del Guidice  
Edward O. and Ann M. Delaney  
Anonymous  
Charles E. and L. Margaret L.  
Denlinger  
The Dow Chemical Company  
Foundation  
Marty DuRall, MBA, SPHR  
Don B. and Suzanne K. Earnhart  
William L. Elder, Jr.  
Eli Lilly and Company Foundation,  
Inc. Matching Gifts Program  
Bill and Edith Enright

ERMCO Inc.  
The Leo J. Falke Revocable Trust  
Farm Bureau Foundation  
Edgar E. and Dorothy W. Fehnel  
Fred M. and Barbara J.  
Fehsenfeld, Sr.  
Fifth Third Bank, Central Indiana  
Richard L. Fine  
First Internet Bank of Indiana  
Matthew and Marguerite Fisher  
Stacy Flanigan, CTP  
Brendan P. and Susan E. Fox  
David and Ann Frick  
Lewis Galloway  
Gannett Foundation  
The Gayman-Davis Shoemakers  
Fund, a fund of Central Indiana  
Community Foundation  
Gilliatte General Contractors, Inc.  
Earl Goode  
Gerd J. and C. Perry Griffith  
Ann B. Grimes  
Ferdinand and Janet Grube  
Anonymous  
Frank and Linda Hancock  
Harrison College  
Jeffrey Hart  
W. Brad Hastings  
Heineken USA

## CAMPAIGN GIFTS (cont'd)

### Supporting Gifts \$1,000-\$49,999 (cont'd)

Gregory G. Hemmingsen  
The Hershey Company  
Robert F. and Kay F. Swank-Herzog  
Steve and Cynthia Hubert  
Ann Hunt  
Rick Hurst  
Indiana Deli Provisions, Inc.  
J. Solotken & Company, Inc.  
James Jacobi  
Bijon D. Jalaie  
Jenn Foundation  
The Jewish Federation of Greater Indianapolis, Inc.  
Lacy Johnson  
Bob Jones  
Georgia G. Jones  
Kimberly-Clark Corporation  
Danny G. Kinser  
Kirby Risk  
Klapper Family Foundation, Inc.  
David W. and Anne J. Knall  
John Koenig  
John and Joni Koenig  
Gregory D. and Jennifer S. Krodell  
Andre B. and Julia Lacy  
Langham Logistics, Inc.  
Cathy Langham and Rick Kocerha  
Mike and Chris Lee  
Lions Share Inc.  
Joseph E. and Susan L. Loftus  
R. Leonard Loker Jr.  
Jay and Christie Love  
Robert and Carol Lukemeyer II  
MacAllister Machinery Company, Inc.  
P.E. MacAllister  
MacDougall Pierce Construction, Inc.  
Patsy Maikranz  
Joseph Matz  
Mickey and Janie Maurer  
McCaw Family Foundation  
Pat McCollam  
Dick McFarland  
Robert and Grace McFarling  
Philip McGeath  
Meade Electric Company, Inc.  
Meridian Street United Methodist Church

## Rotary Club of Indianapolis - \$1.5 million gift gives center its name

The Rotary Club of Indianapolis has a history of humble service. It helped found Riley Hospital for Children, named for member James Whitcomb Riley, and it helped build the Ruth Lilly Health Education Center and the Mary Rigg Neighborhood Center. To recognize its 100th anniversary in 2013, the Rotary Club again wanted to do something significant, said Matt Will, president-elect and chairman of the project selection committee. Will said 70 proposals were submitted. Ultimately, the club's 430 members voted to raise \$1.5 million for Gleaners Food Bank. Pledges reached \$968,000 in early February. In recognition of the Rotary Club's generosity, Gleaners named its new facility the Rotary Club of Indianapolis Food Distribution Center. The name makes this community gift more obvious than other Rotary projects — a response to changing times. "In this era, to get full support [for projects] people need to know who we are," said Will, an associate professor of finance at the University of Indianapolis.

Midwest Mole Inc.  
Dr. and Mrs. M. Kent Millard  
Judith L. Miller  
Michael and Andrea Miller  
David and Robin Miner  
Robert and Marsha Moeder  
Dayton Molendorp  
Jim and Ann Murtlow  
Kyle Nash  
Fred and Nancy Nation

The National Collegiate Athletic Association  
National Hot Rod Association  
Steven and Dawn Neal  
John and Jean Neely  
Nicholas H. Noyes, Jr. Memorial Foundation, Inc.  
The O'Brien Family Fund of The Philadelphia Foundation  
Mike and Anne O'Connor

Tom and JoAnn O'Donnell  
Don and Linda O'Keefe  
Old National Bank  
The OneAmerica Foundation, Inc.  
O'Reilly Raceway Park at I Indianapolis  
Palmer Family Foundation Trust  
Linda L. Pence  
Chris and Carrie Petty

## Publicis Indianapolis

Flyers, posters, press releases, radio and TV spots, logos, invitations — promoting events for Gleaners' capital campaign required hours of effort and a lot of creativity. Fortunately, Publicis Indianapolis stepped up to the task. For more than three years Publicis supported the cause by doing what it does best. According to Kirk Stahl, executive vice president, the agency had a lot of fun doing it. "Our employees compete over who gets to work with Gleaners," Stahl said. "We're proud to be a part of their good work." Gleaners is thrilled with the arrangement, crediting Publicis — the advertising agency behind the familiar "wish there was something I could do" Gleaners ad — with the visibility of its capital campaign. "Every dollar that Gleaners does not pay for advertising and design is another dollar they can use to feed people," Stahl said.

William L. and Beverley J. Pitts  
PNC Foundation  
Gregory W. Porter  
Print Communications Inc.  
Ramsey & North Mechanical Services, Inc.  
Dr. and Mrs. George F. Rapp  
REI Real Estate Services, LLC  
Randy and Kimberly Reichmann  
Anonymous  
Rolls Royce Corporation  
Roselyn Recipe, LLC  
Randall and Diane S. Rowland  
Bernie and Ann Roy  
Brenda Runyan  
The Russ Reid Company

The Saltsburg Fund, Don and Karen Lake Buttrey  
Dennis C. and Sandy Eisenberg Sasso  
Alice Schloss  
Beurt SerVaas  
Helen F. Sheeks  
Robert L. Smith and Janice L. Lesniak  
Stuart and Grace Sobel  
Speedway Lions Club  
Kirk L. and Judy A. Stahl  
Michael and Carol Stayton  
The McFarling Family  
Laurinda A. Swank  
Taft Stettinius & Hollister LLP

Ron Talbot  
Donald W. & Juanita E. Tanselle  
Teamsters Local Union #135  
Theis Foundation Inc.  
Anonymous  
Deborah A. Flanagan Tobias  
Tyson Foods, CP641  
United Food & Commercial Workers  
Maria Vedral  
Timothy and Janet Whiteman  
Karen K. Bohn Whitman  
Matthew and Melanie Will  
Williams Family Fund, a fund of Central Indiana Community Foundation  
Debbie Wilson  
Ronald A. and Linda S. Wolfe  
John T. and Sandy Wortman  
Zink Distributing Company, LLC

## Contractor's selflessness made center possible

Gleaners Food Bank of Indiana has a spacious distribution center today in part because Browning Investments Inc. valued public service over profit. Mike Miller, the food bank's chief operating officer, said Browning Investments was contracted to build Gleaners a 100,000-square-foot center. When the economy receded, Browning representatives alerted Gleaners that a 297,000-square-foot building — the Monarch Beverage facility — had become available at the right price. "We didn't spend a penny more than we would've spent on [a new] building," Miller said. When Gleaners decided to buy the existing property, Browning destroyed the original building contract. "It was absolutely the selflessness of [Browning Investments] that made this building possible," Miller added. Jamie Browning, vice president of Browning Investments and a Gleaners board member, said: "We try to be community-minded partners. It was the responsible thing to do."

# PROGRAMS

## In 2009-2010 Gleaners distributed...

- 100,336 bags of weekend food to low-income children through the BackSacks Program.
- 23,740 after-school and summer meals to children participating in Kids Cafe.
- 38,566 monthly boxes of food to seniors participating in the Commodity Supplemental Food Program (CSFP).

## CSFP for Seniors

### Seniors in need depend on Gleaners, CSFP and you By Brian Brake For Custom Publications

Thanks to the Gleaners Food Bank of Indiana, the federal government's Commodity Supplemental Food Program and local volunteers, underprivileged senior citizens are getting the help they need to get by. The CSFP program is sponsored by the U.S. Department of Agriculture and the Indiana State Board of Health and is administered locally by Gleaners. It helps financially needy senior citizens, most of whom can't afford to buy food after paying other living expenses. Each month, participants receive a 40-pound box of food items, a block of cheese and recipes for healthy meals. To be eligible for services, seniors must be at least 60 and demonstrate financial need. According to CSFP volunteer Anita Woolridge, Social Security is most participants' only source of income — which puts them below the poverty line. She said many seniors who receive support must choose between buying food or paying for prescription medicines. Woolridge volunteers with CSFP by delivering food in the Sacred Heart neighborhood on Indianapolis' near Southside. For 10 years, she's been making deliveries to up to 36 residences per month, using her own truck. "The gratitude people have knowing that this is something they can count on a monthly basis makes it worth it," she said. "For some of these people, I'm the only person they see every month. There are a lot of hungry folks out there, and we need all the help we can get."



# BackSacks . . .

## Weekend Food for Kids

**She saw a need and moved to fill it**  
By Holly Wheeler For Custom Publications

A few years ago, Deliverance Tabernacle Food Pantry was just an idea. "I always wanted to do something to help in the community," said Betty Watson, an assistant special education teacher at Northwest High School in the Indianapolis Public Schools district. "I could see there was really a need, even working in the school, that some children did not have enough. You could tell that they needed more food." After establishing a location for the pantry at Watkins Park, Watson made a crucial move: She called Gleaners

Food Bank and asked for help. "I was able to be trained by someone who worked at Gleaners," Watson said. "I was like, I don't know how to do this, but I know there's a need, and it would be a blessing to the community." Today, the pantry serves 200 families each month. Deliverance Tabernacle Food Pantry is thankful for Gleaners' initial — and continued — support. In particular, Gleaners periodically informs the Watsons of local and national programs that can meet their clients' needs. One is Gleaners' pioneering BackSacks program, which provides nutritious food to children on weekends when they otherwise might not get the nutrition they need. The food doesn't require refrigeration, is easy to open and generally doesn't need to be heated. "The program really empowers children to get some good, healthy food," Watson said.



"A lady came to the pantry on Saturday and she told me the story of raising her brother's two small children, after he had recently passed away, along with her own child. She never dreamed she would be seeking out a food line to provide for these children. She told us she often thinks of giving up and doesn't know how she will make it through until she comes to CCSW and is encouraged with both food and hope. We are able to make a difference!"

- CCSW Staff member

# DONATIONS

With every \$1 you give, Gleaners will...

• distribute eight pounds of food, the equivalent of six meals.

## **Benefactor \$100,000+**

Nina Mason Pulliam Charitable Trust  
United Way of Central Indiana, Inc.

## **Provider \$50,000-\$99,999**

Anonymous  
Lance R. Chrisman  
Feeding America  
The Kroger Company

## **Advocate \$25,000-\$49,999**

Duke Energy Foundation  
Efroymson Family Fund, a CICF Fund  
Eli Lilly and Company Foundation, Inc. Matching Gifts Program  
Federated Campaign Stewards c/o Greater Indiana Combined Federal Campaign  
Fidelity Investments Charitable Gift Fund  
Indianapolis Interfaith Hunger Initiative Inc.  
Indianapolis Power and Light Co.  
Mr. and Mrs. Robert S. Lukemeyer II  
Phillips-Van Heusen Foundation, Inc.  
Stephen Russell and Mag Cole Russell  
Ruth Lilly Philanthropic Foundation

## **Patron \$10,000-\$24,999**

Mr. and Mrs. James S. Adams  
Allison Transmission  
Anonymous  
Ayres Foundation, Inc.  
California Community Foundation-Jeff Dunham Fund  
Charles Miller Memorial Foundation, Inc.  
FISH - Feeding Indiana's Hungry, Inc.  
Food Industry Crusade Against Hunger  
The Grainger Foundation  
Herr Family Foundation, Inc.  
The Indiana Trial Lawyers Association Corp.  
Indianapolis CROP Walk, Church World Service  
Indianapolis Retirement Home Fund, a fund of the Central Indiana Community Foundation  
Klapper Family Foundation, Inc.  
Kuzel Living Trust  
Dr. and Mrs. Patrick C. Logan  
Macy's  
Mary Cross Tippmann Foundation  
Monarch Beverage Co., Inc.  
The Pampered Chef  
Mr. Howard C. Riemensperger  
Sandor Development Company, Dorsand Management Co., Inc.  
State Employees' Community Campaign  
Mr. Neal R. Tucker II  
Anonymous  
Mr. and Mrs. Tim Wagner  
WellPoint Associate Giving Campaign  
WellPoint Associate Giving Campaign  
Matching Gifts  
Willoughby Industries, Inc.

## **Partner \$5,000-\$9,999**

Anonymous  
Anthem Blue Cross  
Anthem Blue Cross Blue Shield  
Automotive Finance Corporation  
Barnes & Thornburg LLP  
BMW Constructors Philanthropic Fund, a fund of The Indianapolis Foundation  
Mr. and Mrs. Jim L. Brown  
Timothy Brown  
The Comcast Foundation  
David M. Cook Foundation, Inc.  
Ms. Rosanna Deitch  
Mr. Wayne S. Deveydt  
Discount Tire Co. Inc.  
Dr. Ramon S. Dunkin and Ms. Barbara M. Stilwell  
Sergio Aguilera and Lori Efroymson-Aguilera  
Fairbanks Hospital  
Mr. and Mrs. Edgar E. Fehnel  
The Finish Line  
Dr. and Mrs. Matthew J. Fisher  
Mr. Nathan Flynn  
The Garden  
Health and Hospital Corporation of Marion County  
Mr. and Mrs. Fredrick M. Hohl  
Holy Spirit Parish at Geist  
Howard Family Charitable Remainder Trust  
Indianapolis Hebrew Congregation  
Indianapolis Power & Light Co.  
Mrs. Alma T. Lathrop  
Lauth Family Foundation, Inc.  
Lilly Endowment, Inc.  
M & I Bank  
Macy's Foundation  
Mr. and Mrs. Kirk McKinney, Jr.  
Meils Thompson Dietz & Berish  
The Michael Andretti Foundation  
National Wine and Spirits Corp  
Nicholas H. Noyes, Jr. Memorial Foundation, Inc.  
Northminster Presbyterian Church  
Peerless Pump Company  
R. B. Annis Educational Foundation  
Rotary Foundation of Indianapolis, Inc.  
Rudd Equipment Company  
Mrs. Helen F. Sheeks  
Ms. Vicki K. Shelton  
Mr. Anthony M. Smith  
St. Paul's Episcopal Church, Inc.  
St. Vincent Hospital and HCC, Inc.  
Sur La Table  
Target  
The Capital Group Companies Charitable Foundation  
The Capital Group Companies Foundation  
The MCR Charitable Foundation, Inc.  
The Netherleigh Fund, a fund of The Indianapolis Foundation  
Scottish Rite of Indianapolis Foundation, Inc. c/o Central Indiana Community Foundation

W.C. Griffith Foundation  
Mary Dorothy Wisely  
The Woodforest Charitable Foundation  
Mr. and Mrs. Sidney C. Zachary  
Zimmer Family Fund, A fund of Central Indiana Community Foundation

## **Fellow \$2,500-\$4,999**

Mr. and Mrs. Gregory Abernathy  
Agape Apostolic Faith Assembly  
Alliance Consulting and Testing, Inc.  
Anonymous  
Anthem Blue Cross and Blue Shield Foundation  
Mr. Mark J. Baker and Mr. Robert G. Wilson  
Ms. Elenita Mae Bodwell Bauer  
The Bank of America Charitable Foundation Matching Gifts Program  
Dr. and Mrs. Kerry L. Blanchard  
BMW Constructors, Inc.  
Carl E. Brehob  
Mr. and Mrs. Timothy R. Brown  
Browning Investments, Inc.  
Cisco Foundation Matching Gifts Program  
Mr. and Mrs. Richard D. Conard  
Mr. and Mrs. Willis R. Conner  
Mr. and Mrs. Gregory C. Davis  
Mr. and Mrs. Larry Dawson  
Mr. Thomas Dormann  
Mr. and Mrs. Timothy G. Eckert  
Eli Lilly and Company Foundation, Inc. Matching Gifts Program  
ExactTarget  
Farm Bureau Foundation  
Mr. and Mrs. Lawrence Fehr  
Gammons Metal & MFG. Co., Inc.  
Give With Liberty Employee Donations  
Mr. Frances L. Hackett  
Harrison College  
Mr. and Mrs. Richard Hawn  
Ms. Jo Lee Hayes  
Mr. Scott Heard  
Mrs. Shirley Henderson  
Estate of Earl Harris and the Earl Harris Fifteen-Year Charitable Lead Annuity Trust  
Mr. and Mrs. Matthew Hook  
Mr. Jeffrey S. Hutchinson  
Indiana State Council of SHRM  
Indianapolis Disc Golf Club, Inc.  
Mr. Bijon D. Jalaie  
The Jenn Foundation  
Mr. and Mrs. Greg Juffer  
Mr. and Mrs. John Koenig  
Mr. and Mrs. Thomas W. Lauer  
Michael K. Lulich & Associates  
Mr. and Mrs. Thomas G Marks, Jr.  
Martin University, Inc.  
Mr. and Mrs. Tim Martin  
Mr. and Mrs. Galen W. Morrow  
Mr. and Mrs. John Neely  
Newgistics, Inc.  
North Campus Surgery Center, LLC  
O'Bannon Foundation, a fund of The Indianapolis Foundation  
Mr. and Mrs. Chris Petty  
Phelan Family Foundation, Inc.  
Karri Phelan  
Ms. Karen L. Porter  
Quickway Carriers, Inc.  
Resort Condominiums. International, Inc., Telemarketing Dept.  
Sablosky Family Foundation, a fund of Legacy Fund  
Schwab Charitable Fund  
Scott A. Jones Foundation, Inc.  
Mr. and Mrs. Reuben N. Shevitz  
Mr. and Mrs. Alex Slabosky  
Mr. Harold E. Smith  
Stanley Byram Foundation  
Stanley H. Byram Trust  
Mr. and Mrs. Murray E. Stewart, Jr.  
Taste of the NFL  
The Brave Heart Foundation  
The Cheesecake Factory Inc.  
The Heavyweights, Inc.  
Mr. and Mrs. Charles H. Thompson  
TOSA Foundation  
Mr. King Traub  
Tuxedo Brothers, Inc.  
Mr. Raymond L. Umstead  
United Hope Foundation, Inc of Indiana  
USA Funds  
Ms. Janis Wagner  
Wal-Mart Foundation  
Weaver Popcorn Foundation Inc.  
WellPoint Foundation, Inc.  
Mr. and Mrs. A. J. Wilson  
Mr. and Mrs. Ronald A. Wolfe  
Zenith Logistics, Inc.  
Mr. and Mrs. Roger Zimmerman  
Zink Distributing Company, LLC

## **Member \$1,000-\$2,499**

Advantage Health Solutions, Inc.  
Mr. and Mrs. Mark E. Alberts  
Allison Christian Church  
Alpha Alpha Zeta of Lambda Chi Alpha Fraternity  
Mr. and Mrs. Dan Alvey  
Mr. Edward Anderson  
Ms. Emily Anderson  
Mr. Thomas M. Anderson  
Mr. Stephen Andrews  
Anheuser-Busch, Inc.  
Anonymous  
Mr. and Mrs. Carl T. Atkinson  
Mr. and Mrs. Paul L. Ayers, Jr.  
Ms. Nancy Ayres  
Bacompt Systems, Inc.  
Mr. and Mrs. Charles Baker  
Mr. Daniel K. Ballinger  
Mr. and Mrs. Arthur R. Baluyut  
The Bank of New York Mellon Community Affairs  
Barnes & Thornburg LLP  
Charles H. and Jean Barnett  
Mr. Douglas C. Baron  
Ms. Constance K. Bash

## DONATIONS (cont'd)

Member \$1,000-\$2,499 (cont'd)

Mr. and Mrs. John C. Bell  
Mr. and Mrs. Tom Bennett  
Mr. and Mrs. Thomas Berry  
Mr. David G. Bertolet  
Mr. and Mrs. Jay Bhatt  
Ms. Ann Bible  
Mr. Michael Birbiglia  
Mr. and Mrs. Mark Blackard  
Kerry L. and Elizabeth Blanchard  
Mr. and Mrs. Jeffrey S. Bocchetto  
Ms. Melissa M. Boggs  
Mr. and Mrs. James M. Bonnet  
Mr. and Mrs. Bruce J. Bowman  
Mr. and Mrs. Oswaldo Luis Bracco  
Brehob Nursery, Inc.  
Mr. and Mrs. John Brehob  
Mr. Thomas Brodnik  
Brookside Community Youth  
Mr. William Brown  
Mr. Charles M. Brown  
Mr. David Bruer  
Bulin and Company, Inc.  
Mr. and Mrs. Edwin C. Bryant  
Mr. and Mrs. Larry Burbrink  
Burgess & Niple, Inc.  
Caldwell VanRiper, Inc.  
Mr. John P. Calhoon  
Calumet Civil Contractors, Inc.  
The Capital Group Companies  
Mr. and Mrs. Peter R. Caric  
Mr. and Mrs. Larry J. Carl  
Dr. and Mrs. William Carr  
Ms. Katharine Carr  
Mr. and Mrs. Thomas M. Carusillo  
Mr. Ralph and Dr. Gail Cassell  
Ralph and Gail Cassell Charitable  
Fund, a fund of Legacy Fund  
Cathedral of Prayer Baptist Church  
C-Cat, Inc.  
Mr. and Mrs. Thomas M. Chamberlin  
Leah Chappell and Margaret Galloway  
Cisco Foundation Matching Gifts  
Program  
Brent and Sarah Claymon  
Mr. and Mrs. Ronald R. Clark  
Dr. and Mrs. Bruce D. Clayton  
Mr. and Mrs. Thomas Coble  
Mr. Ralph Collins  
Mr. Timothy Collins  
Ms. Marita Compton  
Connor Reporting Services, Inc.  
Mr. Daniel M. Cook  
Mr. David Cooper  
Mr. and Mrs. Daniel P. Corrigan  
Mr. Michael Coscia  
Covidien Matching Gift Program  
Covidien Employee Matching Gift  
Program  
Mr. and Mrs. Mitchell Cox  
Ms. Linda L. Cripe  
Mr. and Mrs. Robert Crooks  
Ms. Diane Cruz-Burke  
Mr. and Mrs. Jeffrey D. Cunnington  
Ms. Mary M. Davis  
Delta Faucet Company  
Wayne S. Deveydt  
Dr. Dennis K. Dickos  
Mr. Fred Donnell  
Mr. Craig D. Doyle  
Mr. and Mrs. Barry Dreikorn  
Ms. Michelle M. Duffer  
DW Squared Inc  
Mr. and Mrs. Mark Effron  
Mr. and Mrs. Darcey Elmore  
Employees of ESCO Communications  
Enerdel, Inc.  
Mr. and Mrs. J. Scott Enright

Enterprise Holdings Foundation  
Esco Communications  
Mr. and Mrs. Paul E. Estridge  
Fairview Presbyterian Church  
Mr. and Mrs. Thomas Fansler  
Mr. and Mrs. J. Lee Farr  
Mr. William D. Farrington  
Dr. and Mrs. Philip Fastenau  
Ms. Margaret Feemster  
Mr. and Mrs. Fred M. Fehsenfeld, Sr.  
First Christian Church  
First Internet Bank of Indiana  
Mr. and Mrs. Michael R. Fisher  
Susan Fleck Photography, LLC  
Mr. Thomas E. Fletchall  
Mr. and Mrs. E. Tim Foley  
Mrs. Jane H. Fortune  
Ms. Janet M. Fowler  
Dr. and Mrs. Brendan P. Fox  
Mr. and Mrs. Bruce H. Frank  
Dr. and Mrs. Larry Franks  
Mr. and Mrs. Scott Fraser  
Mr. and Mrs. Gregory Frey  
Frito-Lay  
Mr. and Mrs. Donald Fritz  
Frost Brown Todd  
Mr. Michael R. Fruehwald  
Mr. and Mrs. Terrance B. Fuller  
Mrs. Marjorie Gaier  
Mr. Patrick S. Ganey  
Ms. Pearl J. Gasper  
General Parts  
Ms. Sue Gilliatt  
Give With Liberty Employee  
Donations  
Glaus, Pyle, Schomer, Burns and  
Dehaven, Inc.  
Eugene and Marilyn Glick Family  
Foundation  
Gold Club of Indy, LLC  
Golden Rule Insurance Co.  
Mr. Troy Gordon  
Mr. and Mrs. Clay Gough  
Holy Trinity Greek Orthodox Church  
Mr. and Mrs. Benjamin Greenfield  
William C. and Gerry Griffith, III  
Mr. and Mrs. Gerd J. Griffith  
Mr. and Mrs. Ferdinand W. Grube  
Mr. and Mrs. Robert J. Gruesser  
Mr. and Mrs. Ben Gusler  
Ms. Laura V. Hale  
Dr. James E. Hamby  
Mr. and Mrs. Jeff Hanthorn  
Ms. Carla Hardy  
Harley Owner's Group  
Ms. Julie Harrah  
Ms. Helen Harris  
Mr. and Mrs. Mike Harrod  
Mr. Jeffrey Harty  
The Health Foundation of Indianapolis  
Mr. and Mrs. Richard Hennessey  
Mr. and Mrs. Mark G. Herbison  
Mr. and Mrs. Barry Herring  
Mr. and Mrs. John J. Hewes  
Ms. Kathryn Hill  
Hockema Family Charitable Fund  
Mr. and Mrs. James L. Hoff  
Ms. Susan Hoffman  
Mr. and Mrs. James B. Hogan  
Honda Mfg. of Indiana, LLC  
The Hosanna Foundation, Inc  
Mr. and Mrs. Stephen D. Hoskins  
Mr. and Mrs. Emerson B. Houck  
Dr. and Mrs. Meredith T. Hull  
Dr. Ann Hunt  
Mr. and Mrs. Timothy Hupfer  
Mr. and Mrs. Peter D. Hylton  
Ice Miller LLP  
Immediadent of Indiana, PC  
Indiana Blood Center

Indiana Department of Workforce  
Development  
Indianapolis Power & Light Co.  
Indianapolis Star  
Indianapolis Warren Township Lions  
Club, Inc.  
Ingersoll Rand Security Technologies  
Kenneth H. Inskeep  
Ms. Kristine Isenberg  
Ms. Alexandra S. Jackiw  
Mr. Daniel Jackson  
Dr. Valerie P. Jackson  
Mr. and Mrs. James Jacobi  
Mr. and Mrs. John Jaqua  
Javelina Construction Inc.  
The Jewish Federation of Greater  
Indianapolis, Inc.  
John Koenig  
Johnson Controls, Inc.  
Ms. Lynn H. Jones  
Mr. and Mrs. A. Dave Jongleux  
Mrs. Donna J. Judge  
Mr. and Mrs. Gary Kaiser  
Mr. and Mrs. Robert Kassing  
Ms. Lisa Kelly  
Mr. and Mrs. Maurice L. Kelsey  
Mr. and Mrs. Richard T. Kent  
Mr. William S. Keown  
Mr. Michael P. King  
Mr. Robert Kinzel  
Mr. and Mrs. Jerry Klinker  
Ms. Tina Koenen  
Mr. David Kosten  
Kraabel Charitable Foundation, Inc.  
Ms. Theresa Marie Kraft  
Mr. and Mrs. Anthony Kriech  
Ms. Mary Louise Krise  
Ms. Marjorie Kroeger  
KSM Business Services, Inc.  
Mr. and Mrs. Matthew Kuchinski  
Lankton Family Foundation, Inc.  
Mr. and Mrs. Jon C. Lantz  
Mr. Gregory Larkin  
Arthur W. and Martha F. Larson  
Mr. and Mrs. J. David Leander  
Ms. Kimberly LeCount  
Mr. Jack Lee  
Mr. Ross L. Leisure  
Dr. James A. Lemons  
Levin Living Trust  
Lewis and Kappes, P.C.  
Mr. Lindston Lindberg  
Dan and Laura Liotti  
Mr. and Mrs. Lee E. Livermore  
Mr. and Mrs. David D. Lockwood  
Mr. and Mrs. Joseph Lohse  
Mr. and Mrs. George T. Loudenslager  
Ms. Janett B. Lowes  
Mr. and Mrs. Dwight D. Lueck  
M&I Marshall & Ilsley Bank  
MacAllister Machinery Company, Inc.  
Mr. and Mrs. Matthew T. Maciejczyk  
Patsy Maikranz MD Consulting, PC  
Michael and Jennifer Makalusky  
Marion County Farm Bureau, Inc.  
Marion County Sheriff's Department  
Mr. and Mrs. Joe Mark  
Matera Consulting, Inc.  
Mr. and Mrs. Nicholas E. Mathioudakis  
Maurer Family Foundation, Inc.  
Mr. and Mrs. Dan Mayo  
Mr. Richard O. McClure  
Mr. Pat McCollam  
Mr. and Mrs. Robert E. McEvoy  
Mr. James M. McGill and Ms. Julie K.  
Fetters  
Mr. and Mrs. Michael J. McGlothlin  
Dr. Jean McGrady

Ms. Melissa A. McHaffie  
Mr. and Mrs. Paul D. McWilliams  
Mechanical Contractors Progress  
Council  
Mr. and Mrs. Charles Merideth  
Mrs. Debra L. Meyers  
Bruce and Lisa Miller  
Ms. Judith L. Miller  
Mr. and Mrs. James Minner  
Ms. Jeanne R. Mohr  
Mr. and Mrs. William L. Montrie  
Morgan Lucas Racing  
Ms. Meryl J. Morton  
Mr. Matthew Mossman  
Mr. Michael Mountford  
Mr. Charles J. Mullen  
Mr. John Mullett  
Mr. Christopher F. Murphy  
Dr. Erin S. Murphy  
National Association of Mutual  
Insurance Companies  
Mr. Michael Nee  
Neighborhood Fund of CICF  
New Life Worship Center  
New Westside Inc.  
Newco Metals, Inc.  
Mr. and Mrs. John Nichols  
Mr. and Mrs. Brett D. Nigh  
Ogletree, Deakins, Nash, Smoak and  
Stewart, P.C  
Mr. and Mrs. Don O'Keefe  
Olinger Distributing Co.  
Ms. Sharon A. Oliver  
One America  
One Comcast Center  
Mr. and Mrs. George Owens  
P.F.S. Inc.  
Mr. and Mrs. John L. Pancini  
Mr. and Mrs. Austin L. Peacock  
Ms. Joan V. Persell  
PFM Truck and Car Care Centers  
John D. Phelan  
Phloptochos Society Holy Trinity  
Greek Orthodox Church  
Dr. and Mrs. Stephen H. Pollom  
Ms. Denise Purdie-Andrews  
Quality Connection  
Ms. Joy Quinn  
RCI  
Read Family Charitable Fund, a fund  
of Legacy Fund  
Mr. and Mrs. David Recker  
Reis Nichols  
Mr. Sam Reiter  
Republic Airways  
Ms. Beverly A. Richey  
Mr. and Mrs. Ronald C. Riddell  
Mr. and Mrs. James B. Ridenour  
Merrill A. Ritter, M.D.  
The RND Foundation, a fund of The  
Indianapolis Foundation  
Clay and Amy Robbins  
Mr. Stephen J. Robinson  
Ms. Sarah A. Rowland  
Ms. Mary Frances Rubly  
Ms. Brenda M. Runyan  
Mr. and Mrs. Greg Sachs  
Mr. and Mrs. David B. Salisbury  
Mr. and Mrs. Kenneth Sampsel  
Mr. Jonathan Sarn  
Ms. Kristin Scharnowske  
Ms. Phyllis Schmidt  
Mr. Donald Schultheis  
Schwab Charitable Fund  
Mr. and Mrs. Jerry L. Scott  
Mr. William Scott  
Ms. Nancy Shaw  
Ms. Vickie R. Shaw

## DONATIONS (cont'd)

### Member \$1,000-\$2,499 (cont'd)

Mr. Francis D. Sheski  
Mr. Thomas K. Shine  
Mr. and Mrs. Brian Shivers  
SilverEdge Systems Software, Inc.  
Mr. and Mrs. Ronald J. Sinicki  
Mr. and Mrs. Eric Smith  
Mr. John W. Smith  
Mr. and Mrs. Richard Smith  
Lieutenant Colonel and Mrs. Robert Smith  
Smock Fansler Corporation  
Mr. Brian M. Smock  
Ms. Mara J. Snyder  
St. Stephen's Evangelical Lutheran Church, Inc.  
Dr. James Starling  
State of Indiana Pen Products  
Mr. and Mrs. Edward Steele  
Mr. Kent Steele  
Joe H. Steve  
Mr. and Mrs. Eric Strand  
Drs. David and Pratima Stuhldreher  
Mr. and Mrs. Ryan V. Swearingen  
Syngenta Crop Protection, Inc.  
Taft Stettinius & Hollister LLP  
Mr. and Mrs. John P. Tate  
Mr. and Mrs. Richard Taylor  
Mr. and Mrs. Andrew P. Templeman  
Mr. Engbert J. Terpstra  
The Chef's Academy  
The Cohen Family Foundation, Inc.  
The Piper Group, Inc.  
The Promotion Company, Inc.  
The Rock Island Refining Foundation  
Theis Foundation, Inc.  
Mr. Kenneth J. Thrasher  
Mr. and Mrs. Thomas Tillett  
Mr. and Mrs. Lars E. Torsner  
Mr. and Mrs. Donald H. Trainor, Jr.  
Mr. Michael P. Turberg and Ms. Karen T. Sgroi  
Mr. and Mrs. Richard C. Turner  
Mr. Justin Tysdal  
United North West Area, Inc.  
Mrs. Carol Van Auwelaer  
Mr. and Mrs. Richard M. Van Frank  
Wabash American Benefits Group  
Ms. Angela Wade  
Mr. and Mrs. Douglas E. Wagner  
Wal-Mart Stores, Inc.  
Waples & Hanger  
Dr. and Mrs. George Weber  
Mr. Kyle L. Wenger  
Ms. Kathleen R. Whelan  
Mr. and Mrs. Timothy Whiteman  
Williams & Bluit Funeral Home, Inc.  
Mr. Dallas Willis  
Mr. and Mrs. Robert S. Wilson  
Mr. and Mrs. Robert M. Witt  
Mr. and Mrs. Brian Witzig  
Mrs. Julie Wood  
Mr. and Mrs. Rick Wright  
Mr. William H. Wright  
Youth Achievement League, Inc.  
The Zink Family Foundation, Inc.  
Mr. and Mrs. James C. Zink  
Mr. and Mrs. Don B. Ziperman

# IN-KIND DONATIONS

With every \$1 you save Gleaners by making an in-kind donation...

- the food bank will distribute six meals to Hoosiers in need.

### Benefactor \$100,000+

Monarch Beverage Co., Inc.

### Provider \$50,000-\$99,999

Truck Country of Wisconsin, Inc.

### Advocate \$25,000-\$49,999

Clear Channel Outdoor

### Patron \$10,000-\$24,999

DAST Consulting LLC  
Endangered Species Chocolate  
National Wine and Spirits Corporation  
Publicis  
Second Helpings

### Partner \$5,000-\$9,999

AC Traub Floral  
Fosters Wine Company  
Indianapolis Monthly  
L.M. Henderson & Company  
Sanders Group  
Mr. Michael M. Weiss

### Fellow \$2,500-\$4,999

Anonymous  
Beach Bum Vacation  
Zink Distributing Company, LLC

### Member \$1,000-\$2,499

Air Tran Airways  
Caito Foods  
Dalmation Fire  
FedEx Kinkos  
Fineline Printing Group  
Finish Line USA  
Image Builders, Rowland Printing  
Indiana Pacers Sports & Entertainment  
Indianapolis Colts  
Indianapolis Power & Light Co  
Indy Imaging  
Jewish Community Center  
McFarling Foods  
RCI  
Sur La Table  
The Russ Reid Company  
Two Men and A Truck  
US Food Service

### Gold \$500-\$999

Aerial Arts  
Aronstam Designer Fine Jewelers  
Associated Material Handling  
Belterra Casino Resort & Spa  
Mr. Arthur Black  
Chef JJ's Backyard  
Coca - Cola, Inc.  
Delco Foods  
George E Fern Company  
Five Seasons Sports Club  
Brad and Deborah Hastings  
Good to the Wood  
Hissho Sushi  
Indianapolis Stage Rentals  
International Wine Markets  
Jonas Productions  
Mr. George Kirtley  
Lushin & Associates  
Macy's  
Matt and Jennifer Schwent  
McGuire Scenic  
North Meridian Dental Excellence  
Starbucks  
Mr. Craig Starkey  
Sweet Poppins LLC  
The Kroger Company  
The Oceanaire Seafood Room  
The Studio by Mark A. Rice  
TheOutdoorPatioStore.com  
Tippmann Group / Interstate  
Warehousing  
VHA Central  
Westin Indianapolis

We have carefully reviewed these lists, however, if we made any errors, please accept our apologies. Please contact Peggy Wulff Blackard, CFRE, Director of Development at 317.925.0191 ext. 119 or [pblackard@gleaners.org](mailto:pblackard@gleaners.org) so we may correct our records.

# PARTNERSHIPS

## IHI and Gleaners work to increase access to food pantries

By Sarah W. Shroyer For Custom Publications

Hundreds of food pantries serve people in Indianapolis, but many are open only a few times a month. If a family is hungry today but the nearest pantry doesn't open until next week, the options are limited. They can remain hungry or travel across the city in search of an open pantry.

Interfaith Hunger Initiative is working to ease that dilemma for struggling families. The faith-based group includes local Christian, Jewish, Muslim, Buddhist and Sikh congregations. With input and support from several local food providers, including Gleaners Food Bank, IHI started the Pantry Partner program in 2009. Its goal was to increase the services of food pantries. The group also sponsors a school lunch program in Kenya, providing food for 2,700 children there. According to Dave Miner, volunteer executive director, Pantry Partner offers support in several ways. The partnership underwrites some of the cost of food distribution to participating pantries, has started a capital-improvement grant program, and helps pantries recruit volunteers. Gleaners Food Bank in turn makes sure IHI-supported pantries are well-stocked and have pantry coordinators on staff. IHI and Gleaners now partner with pantries in seven Marion County townships. This helps ensure that families in need have convenient access to food where they live at times that suit their work, school and life schedules. The group's goal is to have at least one participating pantry in each of the county's nine townships. "Gleaners Food Bank is the linchpin of the whole food community," Miner said.



"They have built a team that knows the business and is interested in collaboration. This program is working because of them."



Faith leaders at "Un-Lunch" event on Monument Circle. Log onto [interfaithhungerinitiative](http://interfaithhungerinitiative) for more information

# TRIBUTES

## IN MEMORY OF

**In Memory of Opal Adams**  
Anonymous

**In Memory of Rebecca Billington**

**Alexander**  
Anonymous  
Barbara Roettker  
Carol A. Burger  
Gorana Jokic  
Jennifer L. Butler  
Kathleen Neff  
Lee Ann Slade  
M. Sheila Corbett  
Megan L. Ebersole  
Vicki D. West

**In Memory of Roy G. Altman**  
Marjorie J. Altman

**In Memory of William Earl Alvey**  
James O. and Betty Jo Alvey

**In Memory of Mary Elma Anderson**  
Floyd E. Anderson

**In Memory of Thomas J. Bailey Sr.**  
Teresa, Carolyn, Tom and Mark

**In Memory of Sonia Bangs**  
Butler University  
Lilly Global Patient Safety  
Organization  
Norman H. and Janet Nell Cook  
Roger R. and Carolyn Peterson  
SYM Financial Advisors  
Timothy J. and Melissa A. Bender  
BHP Billiton Petroleum

**In Memory of Bobbi Blake**  
John A. and Pamela M. Purdie

**In Memory of Elenita Mae Bodwell  
Bauer**  
Abigail Sperry  
Dan Dick  
Fred M. and Barbara J. Fehsenfeld, Sr.  
International Alliance Theatrical Stage  
Employees  
Janet W. Wiley  
Jeanna G. Roggenkamp  
Jeffrey B. and Ruth O. Jones  
John F. and Flora M. Donovan  
Katherine Rae McGraw  
Kimberly A. Olive  
Linda L. Cornwell  
Lynn R. and Janet Whitaker  
Mabel H. Schaefer  
Margaret E. Brown  
Marshall D. Bratton  
Nancy L. Brown  
Robert L. Malmquist  
Susanne M. Gooding  
The Ott-Busuttills: Stephanie, Michael  
and Liz, Christine and Herb and  
Stephanie and Jay  
Thomas C. and Conya Scherer  
William H. and Hilda E. Wade  
Clayton N. Bledsoe

**In Memory of Joseph D. Bond**  
Jeffrey P. and Deanna L. Bunten  
Paul Petrotta

**In Memory of Robert Cash**  
Butler-MacDonald, Inc.

**In Memory of Carl Cook**  
First Federal Leasing

**In Memory of Daisy Cowden**  
Jeff and Susan Hanthorn

**In Memory of Raymond Cox**  
Cynthia and Jack Price

**In Memory of David Crawford**  
David Crawford

**In Memory of Sally Curtis**  
Jim Curtis' classmates at Aveda  
Institute  
Bridget Bower

**In Memory of Freda Valeria Dezelan**  
John E. D. Peacock

**In Memory of Harry Donovan**  
Elliot G. and Carol F. Segal

**In Memory of Freda Mae Duffey**  
Autumn Brewster

**In Memory of Tom Duh**  
Rose E. Duh

**In Memory of Mildred I. Dunn**  
Decatur Central High School

**In Memory of Versie Durbin**  
UAW Local 1111 Executive Board

**In Memory of Peter and Eleanore  
Edivan**  
Carleen Huff

**In Memory of Laura Kiebach  
Emmons**  
Keith A. and Carla J. Castelluccio

**In Memory of Sherry Fortner**  
Gerry Fortner

**In Memory of Evelyn Gentry**  
David L. and Judith H. Summers  
Gwendolyn J. Carter  
Lon and Edna Seebach  
Michael B. and Eldonna Risner  
Michael J. and Bonita J. Collins  
Robert M. and Cathy M. Hayes, Jr.  
Terry L. and Sherry M. Gentry  
William G. and Gloria J. Dickson

**In Memory of Mary Margaret Goffinet**  
Jane Backer

**In Memory of Brent Graber**  
Amy McGaffney

**In Memory of Charlotte J. Howard**  
Howard Signs

**In Memory of Jay Haggerty**  
Alan I. and Dorothy Klineman

**In Memory of Charles Hardesty**  
Lisa Fleetwood

**In Memory of Virginia Haro**  
Republic Airways

**In Memory of James Hayes**  
Susan Johnson

**In Memory of Luria Herdrich**  
Charles B. and Kathleen Deck

**In Memory of K. Roberta Herman**  
Holly L. Herman

**In Memory of Gayle Herold**  
Lew Herold

**In Memory of Leathel Immel**  
Helen R. Topp  
Stacie Roeder

**In Memory of Terry L. Jonew**  
Kay, Nancy and Will Stiles

**In Memory of Zona L. Justus**  
Michael and Kelly Peters  
Neil E. and Joan C. Gath  
The Hammans Family

**In Memory of John Robert Kimmet**  
Grace A. Faris

**In Memory of John Robert Kimmet**  
Lance and Nancy Kraai  
Martzan LLC  
Ronald K. and Barbara L. Gorter  
Rosemary Kimmet  
William A. and Suzanne M. Wasitis  
Steven and Laura Gorter

**In Memory of Richard Kitts**  
Martha Jean Kitts

**In Memory of Ronald G. Kleopfer**  
Janet K Kleopfer

**In Memory of Thomas Klota**  
Bradley O. and Marquerite Beal  
F. Pen Cosby  
Katrina Blackwell  
Kesler-Schaefer Auto Auction, Inc.  
Mary E. Poe  
Robert and Linda J. Bilton  
Shelia A. Klota and Karla R. Thompson  
Terry L. and Vicki L. Jones

**In Memory of Jean M. Knox**  
Christine Knox

**In Memory of Helen Kuzel**  
Bill and Val Strasser  
Joseph and Barbara Mattingly  
Michael and Joan Martin  
Richard Clark  
Tidley Cahill  
Dianna Lynn Wright

**In Memory of Norbert Kuzel**  
Bill and Val Strasser  
Dianna Lynn Wright  
Donald E. and Dorothy M. Crough  
Donald G. and Jane T. Truhlar  
Bob and Mary Shanley  
Edward and Joan Gedeon  
Elizabeth Curtis  
Gene A. Scott  
Harold and Amy Strasser  
Joseph and Barbara Mattingly  
Mary McCurdy  
Richard A. Byers

**In Memory of Rachel Laslie**  
Barbara Barton  
David A. and Rosalie M. Farrell  
Jeff and Betsy Laslie  
Sandra L. Lehr

**In Memory of Robert Leavell**  
Ginny N. Taylor

**In Memory of Evelyn M. Montgomery**  
David A. and Ann C. Vaprin  
Fred and Susan Schwab  
Margaret E. Scott  
Mary Anne Kocon  
Mary B. Foster  
Mildred Tucker  
Norman S. Sider  
Sidney and Sharon L. Mishkin  
Victoria A Buzash

**In Memory of Ed Ogle**  
Thomas Gravely

**In Memory of William Peace**  
Pat Patterson

**In Memory of Barbara Pendelton**  
Sally, Bill and Elizabeth Grout

**In Memory of Ruth Perlman**  
Esther, Carlito, Hailey and Max Young

**In Memory of Al Pfeiffer**  
Gold Club of Indy, LLC

**In Memory of Martha Cole Renard**  
Stephen and Mag Cole Russell

**In Memory of Hilda Renshaw**  
Robert L. and Helen F. Rudesill

**In Memory of Norma Rivers**  
Dick Witmer, Sr.  
Marilyn Ramsey  
Phyllis J. Sturm  
Richard and Roxann T. Sturm  
William L. and Betty Jane Dawson

**In Memory of Edwin Robinson**  
Butler-MacDonald, Inc.

**In Memory of Paul McNair Rumble**  
Nathan C. Bell

**In Memory of Judy Sherrow**  
Joseph Allen and Debra J. Whirley  
Marvin and Marceil Jeanes  
Middleboro United Methodist Church  
Mina Wiggans

**In Memory of Carol Shipe**  
The Goen Family

## TRIBUTES (cont'd)

### IN MEMORY OF

#### **In Memory of Robert C. Thomas**

Christy B. Krieg

#### **In Memory of Marji Venneman**

Carol V. Lycans  
Cathy Bickle  
EWI Indianapolis Chapter  
Jennifer Polakoff

#### **In Memory of Ted R. Watson**

Cathy L. McFarlane  
Dave Hanson  
David W. Lewis  
Dean and Mary Runion  
Joanne E. Probst  
John G. and Rita B. Lewis  
Kristen Wolfram  
Lenora Hobbs  
Mary Elise Haug  
Nancy Hubbard  
Rhonda Smith  
Richard and Dorothy Bryant  
Robert R. and Barbara A. Secrest  
Robert W. and Miriam A. Holden

#### **In Memory of Ann Woodfill**

Sue Ellen Greenlee

#### **In Memory of Esther Woods**

Joyce Vaulter

### IN HONOR OF

#### **In Honor of Lori Abner**

Kate Lucas-Falk

#### **In Honor of Sandy Adland**

Kim Berebitsky

#### **In Honor of Advantage Health Solutions**

James Wieland

#### **In Honor of Advantage Health Solutions**

New Avenues, Inc.

#### **In Honor of Luke Aikin**

Brad Aikin

#### **In Honor of Karl and Rachel Anderson**

Pace Analytical Services, Inc.

#### **In Honor of Peter Anderson and Scott Rafferty**

Knight Anderson

#### **In Honor of Ed Andresen**

Eric, Meredith, Sierra, Marc and Otto Andresen

#### **In Honor of Betty Anthony**

Deborah J. Wright

#### **In Honor of April, Meihua, Melissa, Yanlin, Ying and Hongdi**

Mark R. Kelley

#### **In Honor of Ava**

Jeffrey L. and Jalana K. Rance

“I’m touched by the extraordinary generosity of our Hoosiers,” says Cindy Hubert, Gleaners President & CEO.

#### **In Honor of David Baranyk**

Shawn and Liesl McWilliams

#### **In Honor of Sue Bartz**

Michael J. McGlothlin

#### **In Honor of Marie Beard**

Sandra Gilbert

#### **In Honor of Debbie Belles**

Susie Wood

#### **In Honor of Karen Bennett**

Emily B. Wiley

#### **In Honor of Holly Hapak Betz**

Bryan and Mary Chandler

#### **In Honor of Mike Bice**

Gregory and Sylvia Spaulding

#### **In Honor of Mary Bisbecos**

Marilyn Bisbecos

#### **In Honor of Joe Blakely**

Ronald E. and Kate L. Steele

#### **In Honor of Vivian Blankenship and Beth Eckert**

James J. Ray

#### **In Honor of Marian Bloome**

The Gathering

#### **In Honor of Patrick Bogan and Gina Rhineberger**

Audrey Blackwell

#### **In Honor of Louis D. Bojrab**

Shannon D. Arrendale

#### **In Honor of S. Andrew Bond**

Elizabeth J. Casali

#### **In Honor of Dan and Linda Bourne**

Barb and Chris Sharp  
Betty Orr  
Charles E. and Lora M. Spargur  
Elizabeth A. Westenberg  
Esther Jorgensen  
Fred and Monika Stark  
James L. Dillard  
Kenneth L. Duggins and Patricia McKinnon  
Pamela Hyde  
Tracy Sulya

#### **In Honor of John A. Bowe**

Hilary Ricks

#### **In Honor of Marc Boxerman**

Jacob and Florence Sosniak

#### **In Honor of Patrick Boyle**

Gregory and Sylvia Spaulding

#### **In Honor of Sarah Bradley**

Carolyn Liebler

#### **In Honor of Greg Bray**

Carol J. Wills

#### **In Honor of Isiah Brenner**

William H. McDonald

#### **In Honor of Norm and Virginia Bristley**

Thomas and Jane Meredith

#### **In Honor of Dwight Brown**

Gregory and Sylvia Spaulding  
Your Administrators

#### **In Honor of Jamie Browning**

Mary and Bryan Chandler  
Beverly A. Olsen  
David and Nonie Vonnegut-Gabovitch  
Jim and Barbara James  
Unclaimed Furniture GB LLC

#### **In Honor of Don and Mary Buckley**

David J. and Nancy K. Doedens

#### **In Honor of Dawson Bultemeier**

Michele DeMartini

#### **In Honor of Rox Bumpas**

Stacy J. Bumpas

#### **In Honor of Arla and Gay Bush**

Brian E. and Courtney C. Schenberg

#### **In Honor of Pete Butler**

James T. and Jackie Morris

#### **In Honor of Lindsay Byer**

Hunter Stewart

#### **In Honor of Brianna and Kiley Byrd**

Michael S. Taylor

#### **In Honor of S. Kevin Campbell**

Sally, Bill and Elizabeth Grout

#### **In Honor of Frau Melissa Canter**

Amanda Wagner

#### **In Honor of Shirley Werner Carr**

Molly A. Wilkens

#### **In Honor of David L. Casey**

Evelyn N. Kramer

#### **In Honor of Cassie, Clay, Satch and Francis**

Laura and Shannon

#### **In Honor of Cathy Catellier**

Beverly Walker

#### **In Honor of Corie Chaplin and Chris Shea**

The Therapists at Hook Rehab

#### **In Honor of Michael and Caren Chopp**

Margaret Chopp

#### **In Honor of Clients of BDK Financial Services Inc.**

Don Wylin

#### **In Honor of Chris Cofer and Kelly Davis**

Kirk and Sharon Boller  
Leanne M. Batchelder

#### **In Honor of Michael Cohen**

Ilo L. Heppner

#### **In Honor of Terry Collinsworth**

Timothy N. and Terri A. Miller

#### **In Honor of Joy Combs**

Marilyn Bisbecos

#### **In Honor of Nancy Connolly**

The Capital Group Charitable Foundation

#### **In Honor of Dan Cook and Bella Serrat**

Erv and Barbara J. Irwin-Herman

#### **In Honor of Bill Cooney**

Keith D. and Eva R. Monroe  
Lawrence L. and Ann L. Love  
Patricia J. Cooney

#### **In Honor of Jon Cooney**

Jan Cooney

#### **In Honor of Kevin and Sarah Coss**

David and Louisa Hollander

#### **In Honor of Janice Dailey**

Robert P. Dailey

#### **In Honor of David C. Danner**

Jerry Danner

#### **In Honor of Michele Darrow**

Annette Darrow

# TRIBUTES (cont'd)

## IN HONOR OF

**In Honor of Rich Daudelin**  
Roger Pryor

**In Honor of Barbara Deas and Family**  
Pamela Russell

**In Honor of B. J. DeCola**  
Gregory and Sylvia Spaulding

**In Honor of William Deddens**  
Antoinette E. Deddens

**In Honor of Brian DeHaven**  
Kathleen Martis

**In Honor of Ed and Hazel Dhaene**  
Jenna C. Lower

**In Honor of Helen Dickinson**  
Susan Hudnut

**In Honor of Patty Dickmann**  
Susie Wood

**In Honor of Jim Dodson**  
James T. and Jackie Morris

**In Honor of Essie J. Doggett**  
Doris Doggett

**In Honor of Daryl and June Drayer**  
Gary L. and Denise K. Lewis

**In Honor of Richard W. Dyar**  
Doninger Tuohy and Bailey, LLP

**In Honor of Cadel Easterday**  
Carroll Easterday

**In Honor of Ruth Edwards**  
Douglas and Dawn Everidge

**In Honor of Dave and Peggy Eichenlaub**  
Matthew and Julie Yesnick

**In Honor of the Employees at ESCO Communications**  
Esco Communications

**In Honor of Encore Health Network**  
HSM, Inc.

**In Honor of The Falk Family**  
Theodore J. Planje

**In Honor of Sara Farashahi**  
Amberlynn J. Farashahi

**In Honor of Golden and Deloris Faris**  
Gloria Lutz

**In Honor of Gene and Karen Federhofer**  
Gregory J. and Mary D. Huebner

**In Honor of Marilyn Firestone**  
Nancy J. DiCiocco

**In Honor of David Fisher**  
Merril and Emma Thompson

**In Honor of the Fishers High School Band**  
Thad C. Julien

**In Honor of FitCity Indianapolis**  
Gracie Communications

**In Honor of Glendon and Glenda Ford**  
Stephen E. Ford

**In Honor of Bill Fortune**  
Ronald E. and Kate L. Steele

**In Honor of Paul Frederickson**  
Kristen, John and Avery Frederickson

**In Honor of Maxwell Julian Freeman**  
Kari, Scott, Senett and Maisel Henderson

**In Honor of Kristin Froehle**  
William H. McDonald

**In Honor of Alex Gault**  
William H. McDonald

**In Honor of Judy German**  
Richard German

**In Honor of Ken and Debbie Gemenz**  
Kathleen Martis

**In Honor of Robert R. Girk**  
Gary and Kathy Winkler  
Steven C. and Kristin Robinson

**In Honor of Nancy Gitelson**  
Barry and Susan Baer

**In Honor of Bill Glennon**  
Elliot G. and Carol F. Segal

**In Honor of Irena Goloschokin**  
Tim Maginn

**In Honor of Paigey Gottlieb**  
Oren and Melanie Gottlieb

**In Honor of Clay and Wendy Gough**  
Donald and Mary Trainor

**In Honor of Ed Greene and Dan Pugh**  
James J. Ray

**In Honor of Sandra Griffith**  
Dawna H. Powell

**In Honor of Sally Grout**  
S. Kevin Campbell

**In Honor of Cloe Gundle**  
Eric S Gundle

**In Honor of Jud Gurney**  
David and Helen Muram

**In Honor of The Hallock Family**  
The Schallers

**In Honor of Jeff Hamilton**  
James T. and Jackie Morris

**In Honor of Mike and Susie Harmless**  
Heather Donegan

**In Honor of Justice, Evan and Will Harris**  
Andrea and Keith Harris

**In Honor of The Harrison Family**  
Angela J. Harrison

**In Honor of J. C. Hart**  
Babette Harpster

**In Honor of Bruce and Elizabeth Hatcher**  
Margareth Kieschnick

**In Honor of Nicholas and Jo Ann Hatfield**  
Julie Hatfield

**In Honor of Christie Hawhee**  
John A. and Pamela M. Purdie

**In Honor of Joli Heavin**  
Elizabeth Shultz

**In Honor of Judy Heidenreich**  
Susan Hudnut

**In Honor of Jim Hendricks**  
Kim L. Irwin

**In Honor of Owen William Hetrick**  
Gary A. Hetrick

**In Honor of Virginia Hiatt**  
Bob Hiatt

**In Honor of Steve and Tomisue Hilbert**  
Alan Thompson

**In Honor of Marvin and Clara Hirn**  
Anthony L. Winkler

**In Honor of William Hitchings**  
Matt Lotz

**In Honor of Will Hodges**  
Janette Perez

**In Honor of Bernice Hollander**  
David and Louisa Hollander

**In Honor of Billie Hollenbeck**  
Susan Hudnut

**In Honor of Ulrich Hoppe and Valerie Tzucker**  
John and Jody Tzucker

**In Honor of Stephen Hoskins**  
Allie and Aaron Sengstacken

**In Honor of Barb Hoster**  
Susan Hudnut

**In Honor of Dick Hotopp and Jack Layman**  
James J. Ray

**In Honor of William and Rachel Howard**  
Anne Howard

**In Honor of Nicole Hudson**  
Groezinger Alexian

**In Honor of Mary Lou Hurst**  
Susan Hudnut

**In Honor of Kris Hylden and Family**  
Esther Hylden

**In Honor of Donna Imus**  
Susan Williams and David Rimstidt

**In Honor of the Indiana Department of Insurance**  
Indiana Department of Insurance

**In Honor of Indy 58**  
Jennifer M. Spence  
John Wittman  
Karen M. Spence  
Terri Scritchfield

**In Honor of Jim Irsay**  
Beverly, Doug, Caroline, Charlotte and David

**In Honor of Irwin R. Rose and Company**  
Ethel T. Folger

**In Honor of Judy Jones**  
Susie Wood

**In Honor of Jim Kamer**  
Gregory and Sylvia Spaulding

**In Honor of Bill Kimes**  
Ana Lisa Padron

**In Honor of Julia Adair King**  
Aleta Jeffress

**In Honor of Matthew and Hannah Klineman**  
Dolly Hanna

**In Honor of Margaret Knadler**  
Carol Lower

**In Honor of Charles W. Knapp**  
Indiana Sports Corporation

**In Honor of Dick Kohn**  
Florence Silver

**In Honor of Peter and Andrea Konshak**  
Frank A. Workman

**In Honor of Stacy A. Koppelman**  
Elaine Nelson

**In Honor of Terry and Lyn Landis**  
Cynthia McCorkle

**In Honor of William H. and Katherine T. Landschulz**  
Mervyn D. and Laura F. Michael

# TRIBUTES (cont'd)

## IN HONOR OF

**In Honor of Ivy M. Lee**  
Amy F. Lee

**In Honor of Mike and Chris Lee**  
Leslie Wessler

**In Honor of Leesa, Patty, Dawna,  
Karen, Chris, Brock and Don Zeke**  
Sandra K Griffith

**In Honor of Mary Legree-Ford**  
Leslie Hammond

**In Honor of Cathy Letsinger**  
The Six Pack Club

**In Honor of Ann Levenson**  
Florence L. Leviton

**In Honor of Lt. Colonel Willard and  
Ann Levin**  
Levin Living Trust

**In Honor of Liberty Mutual  
Insurance Co.**  
Bill Givney

**In Honor of Krista Lickey**  
Gregory and Sylvia Spaulding

**In Honor of Chris Linderson**  
The Capital Group Companies

**In Honor of Don and Erma Linn**  
The Grothe and Griffin Families

**In Honor of Lillian May Long**  
Butler-MacDonald, Inc.

**In Honor of the Lorenz Family-  
Karri, Andy, Chris, Alex and Devin**  
Marcus Koss

**In Honor of Fran MacAllister**  
Casey Davis  
Charles and Laurie Davis  
P.E. MacAllister  
Sandy MacAllister

**In Honor of Sandy MacAllister**  
P.E. MacAllister

**In Honor of The Mackensen Family**  
Matt, Julie and Wyatt Yesnick

**In Honor of Dolly Magee**  
Steve and Jane Cook

**In Honor of Derrick T. Maroney**  
William T. Maroney III

**In Honor of Marlys Marshall**  
Ken A. Roe and Linda K. Peterson-Roe

**In Honor of Margaret Martin**  
Mary Earley

**In Honor of Joel Martis**  
Kathleen Martis

**In Honor of Keith Martis**  
Kathleen Martis

**In Honor of Dorthea J. Mason**  
Anne Clark  
Beulah M. Schier  
Bob and Diane Meacham  
Center Stage Community Theatre  
Debra Livengood  
Jeffrey A. Boggess  
Joseph F. & Sandra K. Cummings, Jr.  
Kent and Lindsay L. Bagnall  
Mary V. Wagner-Shields  
Steven R. and Margaret Thomas

**In Honor of Danny Joe Maynard**  
Debra Goodwine

**In Honor of Gail McCashland**  
Joseph A. and Wilma Borinstein

**In Honor of Peggy McClung**  
Jay, Zac, Maddie and Emma McClung

**In Honor of Bob and Kathy  
McCorkle**  
Cynthia McCorkle

**In Honor of Ruby Juanita McCracken**  
Faye L. Hall

**In Honor of Robert and Grace  
McFarling**  
Brian W. and Claudia Ewing Grant  
Ellen A. Frost  
Gary and Jane Lawrence  
J. Stuart and Sylvia E. Mill  
Robert and Joyce Coalson

**In Honor of The McGrath Family**  
Scott and Ashley Dietrick

**In Honor of Christina McKee**  
Michelle R. Swing

**In Honor of E. Kirk McKinney Jr.**  
Margot McKinney

**In Honor of Rollie and Ruby  
McKinney**  
Christopher and Karen McKinney

**In Honor of Katy McMurray**  
Bryan and Mary Chandler

**In Honor of Hope McMurtry**  
Butler-MacDonald, Inc.

**In Honor of Nancy McNulty**  
Susan Hudnut

**In Honor of Greg and Patsy Meeks**  
Michelle A. Stoneburner

**In Honor of Sandy Meldman**  
Saree, Bill, Lindsay, Bradley, Richard,  
Jennifer, Rachael and Emily

**In Honor of Homer Merideth**  
Sarah E. Emerson

**In Honor of Jane Merritt**  
Susan Hudnut

**In Honor of Bill and Barbara  
Mickler**  
M. Jane McKahan

**In Honor of Emirl Miller**  
Danyale C. Wilson

**In Honor of Mike and Eileen Miller**  
Richard E. Miller

**In Honor of Howard and Karen  
Millstein**  
David Collins

**In Honor of David Miner**  
Robert D. and Anne M. Nation

**In Honor of Robin Miner**  
Elizabeth H. Klimes and Lilly's Six  
Sigma Community Outreach

**In Honor of Natalie Mitchell**  
Doris E. Douglas

**In Honor of Bob and Marsha  
Moeder**  
James C. and Rita M. Zink  
Jeff and Roxanne Morris

**In Honor of Trudy and Dayton  
Molendorp**  
James Freeman  
Mark C. and Karen D. Roller  
Victoria I. Yamasaki

**In Honor of Robert L. Montgomery**  
The Capital Group Charitable  
Foundation

**In Honor of Mike Moore**  
Matthew and Julie Yesnick

**In Honor of Thomas Moore**  
Matthew and Julie Yesnick

**In Honor of Eric and Amy Morgan**  
Sara Simmons

**In Honor of James T. and Jackie  
Morris**  
Eugene R. Tempel  
Stephen A. and Patty Brinegar

**In Honor of Steve and Terri Mosier**  
Anna Langford

**In Honor of Catherine Moulder**  
David M. and Doris A. Law

**In Honor of Catherine Moulder**  
James A. and Billie Sue Burris

**In Honor of Catherine Moulder**  
Joseph F. and Sharon L. Coleman

**In Honor of James H. and Susan  
Naus**  
Jim and Susan Naus

**In Honor of Ralph Neiman**  
Jerald T. Neiman

**In Honor of Wilson Nesbitt**  
Butler-MacDonald, Inc.

**In Honor of the New Family**  
Erv and Barbara J. Irwin-Herman

**In Honor of Judy Newton**  
G. Howard Krauss, Jr.

**In Honor of David and Rita Nielsen**  
Ron Winiger

**In Honor of Frank O'Conner**  
Mary Frances Hayes

**In Honor of Office Staff of Bright  
Sheet Metal Co., Inc.**  
Elizabeth A Quinn

**In Honor of Christine O'Neill and  
Jeremy Taylor**  
Marta G. O'Neill

**In Honor of George and Faye  
Owens**  
George and Faye S. Owens

**In Honor of Pam, Dawn Nicholas  
and Morrigan**  
Nancy A. Brooks

**In Honor of Louis B. Pancini**  
John and Deborah Pancini

**In Honor of Marsha Parry**  
Gregory and Sylvia Spaulding

**In Honor of Heather Paynter**  
Vicki Paynter

**In Honor of Chris Pence**  
Todd, Jenny and family

**In Honor of Frank Perkins**  
Juanita M. Marvel

**In Honor of Sandra Sue Phillips**  
Consona Corporation  
Joyce Vaulter  
Karen L. Forristal  
Steven Shepard

**In Honor of John P. Pierce**  
Lynn M. Oliver

**In Honor of Carol M. Pierce-Poland**  
Kevin L. and Pamela S. Dilley-Rider

**In Honor of James J. Ray**  
Patricia A. Gullick

**In Honor of John P. Pigeccella**  
Ben and Michelle Newcomb  
Betty Burns  
Nancy Pigeccella  
Ned and Doris Schurr  
Ronald D. and Christel Long  
The Methodist Men's Club, S. U. M. C.

**In Honor of Mattie Pillow**  
Stephen and Candi Watts

**In Honor of Charles Platz and Jo  
Benda**  
Charles Platz

**In Honor of John and Jean Pock**  
Jennifer Belle

# TRIBUTES (cont'd)

## IN HONOR OF

### In Honor of Sidney Rains

Norma J. Kraft

### In Honor of Neal Ravindra

William H. McDonald

### In Honor of the Ray Family

Lynda and Ray Pack

### In Honor of Ralph E. Reiman

Anonymous

Betty Dean

Betty J. Sendi

Betty Wolf

Butch L. and Marie Mercer

Charmaine Vargo

Dave and Peggy Matson

David A. and Karen Reiman

David and Kathleen Trautmann

Douglas K. and Karen L. Kelsey

Eugene and Ruth Vigus

Harold G. Sowman

James P. and Jeanette Sowman

John Becky and Bo Sendi

John R. and Margaret A. Hooten

Keith and Jennifer Ogden

Monroe Community College Board of

Trustees

Orrin and Cecelia Tovson

Robert L. and Luella Humbarger

Robert W. and Nina L. Butler

Thomas E. and Vera Sowman

### In Honor of Dr. and Mrs. Lance

Rettig

Ellen Rice

### In Honor of Kennedy Rhodes

Lucia Carter

### In Honor of Bob Rich

Rick and Sandy Wood

### In Honor of Mrs. Richard Leventhal

Florence Silver

### In Honor of Caroline Grace Rigler

Earl and Linda Rigler

### In Honor of Riley Hospital

Anesthesia Staff

Erv and Barbara J. Irwin-Herman

### In Honor of Riley Hospital

Operating Room

Erv and Barbara J. Irwin-Herman

### In Honor of Riley Hospital X-Ray CT

Erv and Barbara J. Irwin-Herman

### In Honor of Richard and Jorita

Ritter

James Roesinger

### In Honor of Juliet C. Roberts

Ronald E. and Kate L. Steele

### In Honor of Madelyn and Sophia

Rogers

Jeffrey Rogers

### In Honor of Dave Rogoff

John Palmer

### In Honor of Charles and Joyce Rondeau

Charles G. Rondeau

### In Honor of Darrel L. Ross

Albert, Angela, Emilee and Jakob

LeBlanc

### In Honor of Will Runkle and Alex Vongphakdy

John, Jennifer, Allysa, Patrick and

Savannah Britting

### In Honor of Steve and Mag Russell

Rita H. Steinberg

### In Honor of Susan Salisbury

David E. and Brooke E. Salisbury

### In Honor of Sandy, Leesa, Don, Patty, Karen, Dawna and Brock

Hokanson Property Managers

### In Honor of Gary and Irene Savine

Jacob and Florence Sosniak

### In Honor of Geoffrey Segar

Frances L. Hackett

### In Honor of Judy Sherrow

Ben and Ann E. Witherington

### In Honor of Charlene, Curt, Danielle, and Amanda Short

James and Kathy Strickland

### In Honor of Marcia Shreve

Jennifer C. Ferry

### In Honor of Michael Simmons

Tim and Marjorie Maginn

### In Honor of Fred and Arline Simon

Peter N. and Karen L. Reist

### In Honor of Brynner Jude Sloan

Margaret Haehl

Robin M. Lybolt

### In Honor of Ralph Smith

Linda L. Meyer

Melvin S. Benn

Stanley M. and Mary E. Smith

### In Honor of Dorie Sonley

Ellen Ebacher

### In Honor of Douglas E. Stark

Patricia Parry

### In Honor of Rosemary V. Steckler

Robert A Davis

### In Honor of Susan, Terri, Wesley and

Randi Steele

Virginia Hoover

### In Honor of Alice E. Stout

Margaret C. Coyne

### In Honor of Howard Sturdivant

James J. Ray

### In Honor of Jim and Jere Sturges

Tom and Jean Sturges

### In Honor of Douglas P. Summers

Kelly D. Shaw

### In Honor of Tucker and Maggie

Summers

Charles and Lynn Summers

### In Honor of Maria Tasch

Richard and Robin Weiss

### In Honor of Margaret E. Tedrowe

Sarah Schaefer

### In Honor of Annie Terry

Susie Wood

### In Honor of The Adams Family

Anonymous

### In Honor of The Development Team

at Gleaners Food Bank

Penny Van Arsdale

### In Honor of The IMA Education

Department

Emily Hansen

### In Honor of The Sizer Family

Matthew and Julie Yesnick

### In Honor of Ritvik Thondapu

Sudheer Thondapu

### In Honor of Stu Tobias

Elliot G. and Carol F. Segal

### In Honor of Teresa K. Toles

Teresa K. Toles

### In Honor of Curt and Rosemarie

Travis

Arthur L. Noirns

### In Honor of Joe Trimble

Janet A. Trimble

### In Honor of TV Freelancers Party

Matthew John

### In Honor of Pierre and Susan Twer

David and Louisa Hollander

### In Honor of University of

Cincinnati

Cynthia A. Gillman

Jayne Little

### In Honor of Douglas and Linda

Uselding

Lisa L. Welch

### In Honor of Linda Kay Van Hoy

Patricia A. Gullick

### In Honor of Ted Vernick

Florence Silver

### In Honor of Vince and Sue Greiner

Vince Greiner

### In Honor of Hazel Walker

Jill Bode

### In Honor of Dave and Elaine Walsh

Patrick J. McEvoy

### In Honor of Paul Watson

Kelly D. Watson

### In Honor of Wells Center Administration Staff and Team

Mark R. Kelley

### In Honor of Mary Wells

Robert P. Dailey

### In Honor of Kristin Whaley

Karen Whaley

### In Honor of Kathleen R. Whelan

John M. Whelan III

### In Honor of Jim Wikel

PJA

### In Honor of William B. Toler, Jr.

William B. Toler

### In Honor of Jonathan, Anne, Rand, Caleb and Marlie Wilson

Daniel and Kathryn Wilson

### In Honor of Donna Wisthoff

Mara J. Snyder

### In Honor of Sue Woods Phillips

Terry R. and Margaret J. Lynch

### In Honor of Evelyn G. Yansky Bell

Myers

Daisy M. Bloodworth

David R. and Marianne Jarrard

Douglas L. Timmons

Marilyn H. Bell

Mary A. Purcell

Philip M. and Elizabeth C. Purcell

Rose Jackson

Sarah E. Emerson

Susan Harris

Timothy R. and Joyce L. Purcell

### In Honor of Thomas and Derren

Yerks

Karie M. Fitzwater

### In Honor of The Yesnick Family

Matthew and Julie Yesnick

### In Honor of Kathleen Yesnick

Matthew and Julie Yesnick

### In Honor of Lynn Walker Young

Susan Hudnut

### In Honor of Jack and Roz Zacks

David E. Gurvis

# PARTNERSHIPS

## Kroger + Gleaners = An effective partnership

By Holly Wheeler For Custom Publications



For 28 years, The Kroger Co. has partnered with Gleaners Food Bank to help reduce hunger in central and southeastern Indiana. The relationship began when Kroger donated donated nonperishable foods for distribution to some 200 regional food pantries supported by Gleaners. Over time, the partnership has grown. In 2010, the Kroger Central Division donated more than 1.8 million pounds of food to distribution agencies, with over 440,000 pounds of it going to Gleaners. Each year, Kroger's support of Gleaners nears the \$1 million mark.

### Corporate focus

Ending hunger is The Kroger Co.'s chief priority, and the company strives to meet that goal through its retail stores and through charitable giving. For Kroger, Gleaners represented a direct connection to many central Indiana food pantries. Bob Moeder, president of Kroger's Central Division, serves on the Gleaners board of directors. His company offers advice on everything from food storage and refrigeration to logistics and helped redesign Gleaners' new facility. Many Kroger employees volunteer with Gleaners, too.



### Program impact

Kroger's relationship with Gleaners expanded in 2008 when the grocery began donating perishable foods as well.

"If we have meat that's lost its bright red color or vegetables that are just beginning to turn — they're still perfectly good and safe to eat — we have a truck that takes them to Gleaners," Moeder said. Called the Perishable Donations Partnership, Kroger's program has saved millions of pounds of edible food while increasing food donations to charitable organizations. Trucks pick up food daily from Kroger stores throughout central Indiana and deliver it to Gleaners. The items then are passed along to soup kitchens, pantries and other programs that provide food to those in need. Still more perishable food is taken to Gleaners' massive new facility, where it can be frozen and stored. Kroger also participates in Gleaners' BackSacks program, which provides healthy food to needy kids on weekends. "We are also big supporters of K through 12 education," Moeder said, "and [Gleaners does] the BackSacks. That really is nice program, one of the other reasons we believe in what Gleaners does."

### Feeding the future

As Gleaners celebrates its 31st anniversary, its relationship with Kroger remains steady and strong. Both Kroger and Gleaners see their partnership as vital to meeting a shared goal of ending hunger. The food bank's new facility is a giant step forward.

"They have a facility now, and a lot of food banks struggle to have facilities and maintain them," Moeder said. "This new food bank is big enough and has the capacity to service a lot of food pantries on a daily or weekly basis. They will be the model for food banks across the country as they continue to grow into this facility and do what they do best — feed the hungry."



**Bob Moeder**  
President, Kroger Central Division

# FOOD DONATIONS

In 2009-2010 generous food donors contributed

- 25.3 million pounds of food, the equivalent of 19 million meals for hungry Hoosiers

A Cup Above Coffee Catering  
Acom Distributors  
ACS  
Adrian Orchard  
AGA  
Akron Food Bank  
Aldi  
Algood Food Company  
All Souls Unitarian Church  
AMC Theatres  
American Italian Pasta Co  
Americold  
Aprimo  
Armour Swift-Eckrich, Inc.  
ATAPCO  
Atkins Desserts  
Atlas Cold Storage  
Aunt Millie's Bakeries  
Awrey Bakeries  
Barilla America, Inc.  
Bazbeaux Pizza  
Big Lots  
Big Valley  
Burlington Meat  
Butler University  
Caito Foods  
Campbell Food Service  
Capital Grille  
Cargill  
Caring & Sharing  
Carolina Logistics  
Chef's Academy  
Chiquita  
Cimino Brothers Produce  
Circle City Deli Provisions  
Coca-Cola  
Commercial Food Systems  
Contrack Logistics  
Conagra Foods Inc.  
Cornerstone Bread Co  
Covance  
Covenant Food Marketing  
CR England Logistics  
Crosby Trucking  
Crossroad Farms Dairy  
CVS  
Dada's Pizza  
Dannon  
Darlington Farms  
Delco Foods  
Dhillon Trucking Inc.  
Diamond Foods  
Diversified Foods Inc  
Dole Food Co.  
Dot Foods  
Duda Farm  
Dugdale Beef

Dulcinea Farm LLC  
Eby-Brown  
Endangered Species Chocolate  
Entemann's  
Exel  
Farm Fresh Delivery  
Farmland  
Faurecia  
Favored Dairy LLC  
Flowers Bakery  
Fresh Logistics  
Frito Lay  
Frontier Transport  
Genco  
General Mills  
Genesis Bagels & Deli  
Georgetown Market  
Good Earth  
Good Source Foods  
Gordon Food Service  
Gordon Trucking  
Gray Bull Organic Wines  
Great Harvest Bread Company  
Greater Chicago Food Depository  
Grocery Supply Company  
H.T. Hackney  
Hanover Foods  
Harlan Bakery  
Harvest Rice Inc.  
Heartland Sweeteners  
Heinz North America  
Hershey Chocolate Company  
Hinkle Produce  
Ideal Meats  
Indianapolis Fruit  
Ingersoll Rand  
Interstate Warehouse  
IPS Facilities Management Divison  
IPS Food Service  
Jay C Stores  
John Christner Trucking  
John Morrell  
Julian Center  
Justus Company  
K & S Transport  
Kahiki Foods  
Kellogg Company  
KLLM  
Kraft Foods  
Kraft Nabisco Division  
Kroger Company  
Land O' Lakes  
Lewis Bakery  
Little Debbie  
Madison's Grand Ave. Chocolate  
Maple Leaf Bakery  
Market Day Corporation

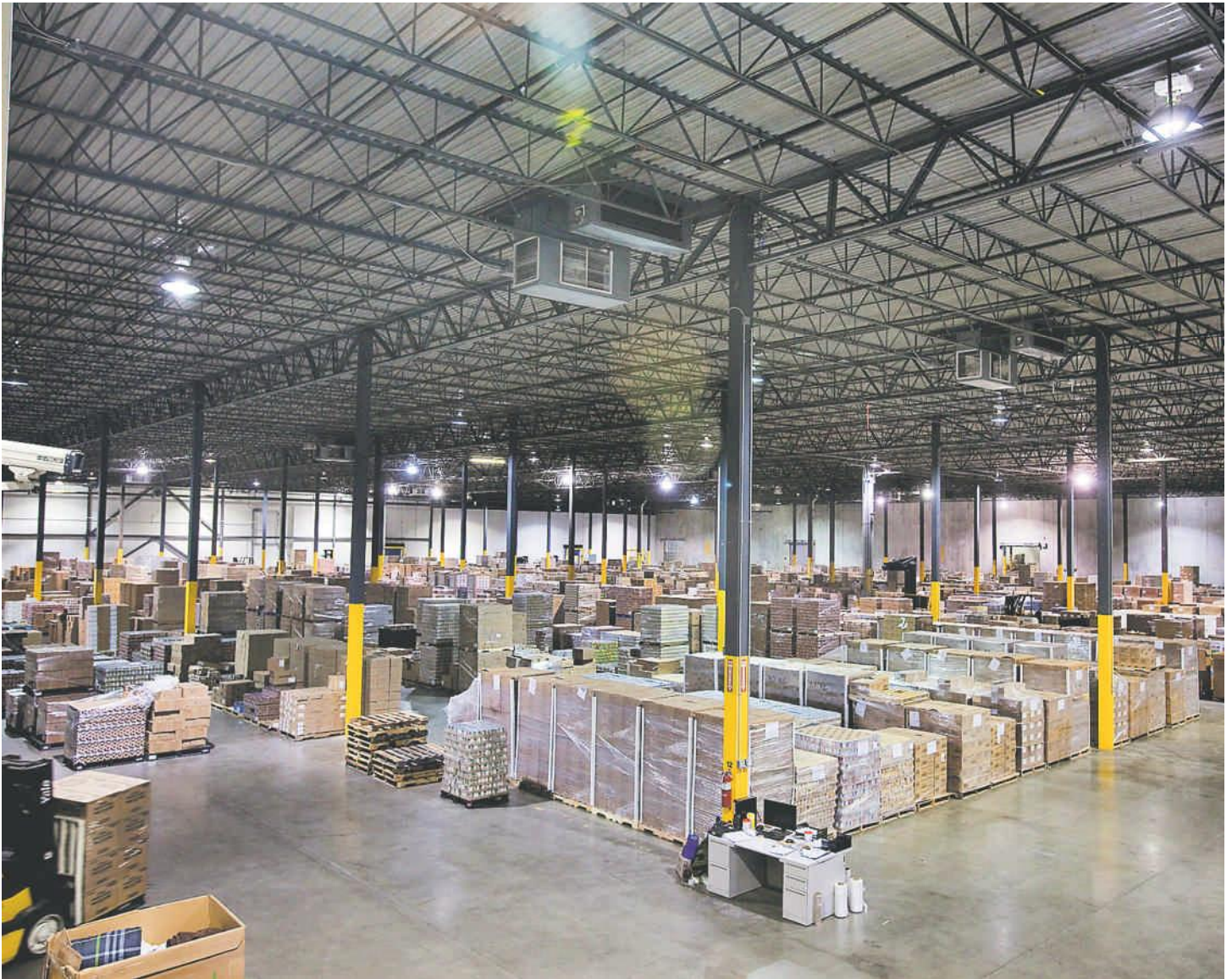
Marsh Supermarkets  
Marten Transport  
McCook Cold Storage  
McFarling Foods  
Meijer  
Merchandise Warehouse  
Midwest Warehouse  
Milroy Canning Co.  
Monarch Beverage  
Monster.Com  
N.K. Hurst Company  
Nature's Pharm  
Nestle USA Inc.  
Network Global Logistics  
Network Masters  
Northern Illinois Food Bank  
Northwest Dairy Association  
Ocean Mist Farms  
O'Malia's Supermarket  
Online Transport  
Pam Transport  
Pamida  
Park 100 Foods  
Peaper Brothers  
Pendleton Correctional Facility  
Pepperidge Farms  
PepsiCo  
Piazza Produce  
Pilgrim's Pride  
Piper Logistics  
Prairie Farms Dairy  
Prime Distribution  
Prime Inc.  
Proctor & Gamble  
Prologis  
Purdue Extension Master Gardeners  
Pure Beverage Company  
Quaker Oats  
Really Cool Foods  
Red Gold  
Reser Foods  
Resource Commercial  
Richmarc Productions  
Roma Foods Indianapolis  
Rose Acre Farms  
Royal United Market  
Sam's Club  
Sara Lee  
Saraga International Market  
Second Helpings  
Seldom Seen Farm  
Shaffer Trucking/Crete Carrier Corp.  
Shamrock Garden Club  
Shavey Transportation  
Showtime Concessions  
Sikh Satsang Of Indianapolis  
Skyline Chili

# FOOD Donations (cont'd)

SMC Corporation of America  
Snacks & More  
Snyder's of Hanover  
Sodexo  
South Stream Seafoods  
Southern Specialties  
Southern Transportation  
Spade & Trowel Garden Club  
St. Francis Hospital  
Stallion Transportation Group  
Stanley's NY Deli  
Starbucks  
Stevens Transport  
StreetLinks National Appraisal  
Sunny Delight  
Sur La Table  
SVdP Client Choice Pantry

Schwan's  
SWS  
Sysco  
Taco Bell  
Take It To The Streets  
Target  
Taylor Farms Retail Inc.  
Temple Inland  
TGI Fridays  
Third Phase  
Thomson Inc.  
Tienda Morelos  
Treat America Food Services  
Trident Seafoods  
Tri-State Coca-Cola Bottling  
Tuttle Apple Orchard  
Tyson Foods Inc.

U.S. Cold Storage  
U.S. Foods  
U.S.A. Trucking  
Unilever  
USDA Indiana Farm Service  
Wal-Mart  
Weaver Popcorn  
Weaver Produce  
Wheeler Mission Rescue  
White Wave Foods  
WT Fellows  
XFInc.  
Zenith Logistics  
Zinc Distribution



Gleaners' new 297,000 square foot warehouse allows the food bank to accept more product from generous donors.

# FOOD DRIVES

1st Congregational Church  
Access Self Storage  
Acorn Distributors  
ACS  
Adesa  
Adjutant General's Office  
Adult & Child Services  
Advanced Physical Therapy  
Advantage Healthcare  
AGA  
Ahepa 232 Apartments  
All Souls Unitarian Church  
Allstar Bowl  
Allstate Insurance  
AlphaGraphics  
American Society Civil Engineers  
Americenters  
Anthem Blue Cross Blue Shield  
Applied Engineering Services  
Architectural Glass & Metal  
Arlington High School  
Arlington Roe & Co  
Arsenal Technical High School  
Asante Childrens Theatre  
ASI Signs  
Association of International Women  
AT&T  
Atapco  
ATC Associates, Inc.  
Athens-Perfection Auto Glass  
Aurora Loan Services  
Baker & Daniels  
Bamberger Foreman Oswald Hahn  
Barnes & Thornburg LLP  
Bayview Club  
Beam Longest and Neff LLC  
Bicycle Garage Indy  
BMV  
BNI Fast Trackers Chapter  
Brad Paisley-Verizon Music Center  
Bright Sheet Metal  
Buckingham CO  
Bud's Tavern  
Burd Ford  
Bureau of Jewish Education  
C.R. Heroes Family Pub  
Cabana Room  
Cal East Industrial Investors  
Cambridge Square North  
Canal Square Apartments  
Career Development Professionals of  
Indiana  
Carrington Mortgage  
Cassidy/Turley  
Castleton Mall Management  
Castleton UMC  
Catalyst  
Cathedral High School  
CB Ellis  
Central Indiana Wilderness Club  
Chamber of Commerce Bldg. Corpora-  
tion  
Charles Schwab & Co., Inc.  
Chase Bank  
Church Church Hittle & Antrim  
Church of The First Born Saint  
Church of The Living God  
CICOA  
Citimark Management Co  
Clairian

Classical Systems  
Clover Leaf Apartments  
Cold Spring School  
Colts Sacking Hunger  
Compton Mechanical Services  
Conagra  
Congregation Beth El Zedeck  
Conseco Insurance Co  
Contour Hardening  
Corey School  
Corporate Challenge 2010  
Covance  
Cracker's Comedy Club  
Creskide Middle School  
Cripe Architects & Engineers  
Crown Point Graphics  
Curves  
Decatur Intermediate Learning Center  
Delta Northwest Airlines  
Dental Assisting Class IUPUI  
Department of Child Services  
Dominic Cornett Douglas Park  
Drewy Simmons Vornhm LLP  
E L S Language Center  
Eagle Point Apartments  
Eastwood Middle School  
Economy Plumbing Supply  
Eiteljorg Museum Guides  
Eli Lilly & Company  
EMLI/Castle Creek Apartments  
Emma Donnan Boys & Girls Club  
Employment One  
Enterprise  
ESCO Communication  
Expo Bowl  
Fall Creek Valley Middle School  
Faurecia  
Federated Insurance  
FedEx  
Fidelity Investments  
Finish Line  
First Advantage  
First Church of Christ Scientist  
First Congregational Church  
First Residential Mortgage  
Fisher Elementary School  
Fisherman's Village Apartments/Pebble  
Fishers High School Performing Arts  
Fishers Veterinary Hospital  
Five Seasons Sports Club  
Forest Dale Elementary  
Forest Manor Wishard Health Services  
Franklin Road Branch IMCPL  
Fusion Alliance  
Geist Dental Care  
Geist Martial Arts LLC  
GEMMS  
General Casualty Insurance  
Girl Scout Troop 414  
Girl Scouts Carmel West Service Unit  
Golden Living Center  
Golden Rule Insurance  
Governors Council for Disabilities

Grace Presbyterian Church  
Great Harvest Bread Co  
Greatbatch Medical  
Guitar Center  
Guru Nanak  
H&R Block  
Hamilton 16 Theater  
Harrison College  
Hartford Insurance  
Health First Physical Rehab  
Health Scope Benefits  
Health Source  
Heatherwood Neighborhood Association  
Heritage Environmental Service  
Hertz Investment  
Hillside Christian Church  
Hilton Food Drive  
Hindel Bowl  
Hoosiers Fighting Hunger  
Hoosiers Helping Hoosiers  
Hooters  
Horton, Inc.  
Houghton Mifflin  
Housing Urban Development  
Humane Society of Indianapolis  
Hunt Construction Group  
Hurco Companies  
IBM  
IHI Cathedral Thanksgiving  
IMCU Executive Office  
Indiana Apartment Association  
Indiana Blood Center  
Indiana Commission of Higher  
Education  
Indiana Department Homeland Security  
Indiana Department of Labor  
Indiana Dept. of Corrections  
Indiana Future Problem Solvers  
Indiana Gaming Commission  
Indiana Historical Society  
Indiana Sports Corporation  
Indiana State Department of Health  
Indiana State Employees  
Indiana State Museum/Imax  
Indiana State SHRM Conference  
Indiana Woman's Prison  
Indianapolis Chamber Orchestra  
Indianapolis Colts  
Indianapolis Hebrew Congregation  
Indianapolis Indians Victory Field  
Indianapolis Indians/Victory Field  
Indianapolis Marion County Public  
Libraries  
Indianapolis Public Schools  
Indianapolis School of Ballet  
Indianapolis Star Newsroom  
Indianapolis Water Company  
Indianapolis Zoo  
INDOT  
Inner Peace Yoga Center  
Insights Consulting, Inc.  
Intech  
Interfaith Hunger Initiative  
IRS  
Irvington Community School  
ISFAA  
ITT Technical Institute  
IU School of Medicine

IUPUI  
IUSM-IMSIG  
Ivy Tech Community College  
J B Hunt, Inc.  
Jared Pub  
JC Penney Co  
Jean E Ford-UW Alumni Association  
Johnson Controls  
Joseph K Kaiser & Associates  
JR Old Cars Only  
July 4th Food Drive  
Junior Achievement Central Indiana  
Justus Company  
Juxtapoze Squared  
Keystone Investments  
Kim Mahaffey  
Kindercare Learning Center  
Kiwanis International  
Korean Presbyterian Church  
Kroger-Share Your Feast  
Lambda Chi Alpha-Alpha Alpha Z  
Larue D. Carter Memorial Hospital  
Lead Jen LLC  
Leon Jett Food Drive-Eiteljorg Museum  
Letter Carriers Food Drive  
Liberty Mutual  
Live Nation  
M & I Bank  
Main Event  
March Against Hunger  
Marcia Moore  
Marian University  
Marion Co DFR/ACS  
Marion Co Fairgrounds  
Mark Williams  
Marriott Downtown  
Marsh  
Master Gardeners  
Mayor Ballard's Luau  
McCready & Keene, Inc.  
McDonald's  
Med Shield, Inc.  
MEDCO  
Medical Excess  
Meridian Lakes Apartments  
Meridian Music  
Meridian Street Preschool Co-Op  
Methodist North Radio 064  
MMP/TRI MED  
MONSTER.COM  
Mo's Irish Pub  
Murat  
National FFA Organization  
National Government Service/Wellpoint  
NCAA Hall of Champions  
Nelson Mortuary  
Newby Elementary  
NFHS  
North Haven of Carmel Apartments  
Northminster Presbyterian Church  
Northside Montessori  
Northwest High School JROTC  
Nuvo  
OHL  
Old Castle Glass  
Old National Insurance Commercial  
Lines Claims Analyst  
Old Navy  
O'Malia Supermarket  
One America Corporation  
Orchard Software  
Orthopedic Research Foundation

The number of people in poverty rose 18.6 % -  
from 242,000 in 2008 to 287,000 in 2009.

# FOOD DRIVES (cont'd)

Ovation Audio Video  
PAC-VAN  
Park Avenue Church of Christ  
Park Tudor Middle School  
Pavin' The Way Software  
Paychex, Inc.  
Pendleton Correctional Facility  
Pepsico/Quaker  
Performance Validation  
Pike High School NJROTC  
Potter Law Group PC  
Precision Cutoff of Indiana LLC  
Princeton Lake Apartments  
Prologis  
Promise Church  
Prudential Insurance  
Q95/WFBQ  
R.C.I.  
RCG Indiana  
Reebok Group Athletica  
Renaissance Administration  
Rent A Center  
Richmarc Productions  
Roche Diagnostic  
Rosewalk Apartments  
Royal United Market  
Saint Gobain Abrasives  
Saint Luke's School  
Saint Stephens Lutheran Church  
Saint Vincent Heart Center  
Salin Bank & Trust  
Sallie Mae, Inc.  
Sandor Development  
Scottish Rite  
Sears Outlet Store  
Seven Corners, Inc.  
Sexton Properties  
Shamrock Garden Club  
Shane Fischer Haunted House  
Sharon Stamper Thompson  
Shortridge Middle School  
Sidener Academy  
Sigma Gamma Rho Sorority, Inc.  
Simon Property Group

SMC Corporation of America  
Somerset CPAS PC  
SOOB #90  
Spade & Trowel Garden Club  
Speedway Lions Club  
Spinnaker Apartments  
St. Stephens Lutheran  
Stacey Harmon  
Staffmark  
Standard Life Insurance Co  
State Farm Insurance  
Stericycle, Inc.  
StreetLinks National Appraisal  
Summit Realty Group  
Sycamore Springs  
Taft Stettinius & Hollister  
Take It To The Streets  
Tamika Catchings Fitness Clinic  
TGI Fridays  
The Block Apartments  
The Care Group  
The Cheesecake Factory  
The Drifters, Inc.  
The Marten House  
The Monon Center  
The Project School  
The Springs Apartments  
Theta Chi Fraternity International  
Headquarters  
Tom Wood Ford  
Towne Meadow Elementary School  
Trinity C. M. E. Church  
Tuxedo Brothers  
Two Men And A Truck  
Unified Funds  
University of Indianapolis  
University of Phoenix  
USA Funds  
Utility Consumer Council  
VA Medical Center  
Van Rooy Properties  
Vanity  
VHA Central  
Vineyard Community Church  
Wal-Mart  
Washington Square Mall  
Wayne Township Preschool  
Weight Watchers  
Wellpoint/Anthem

Westbury Apartments  
Wiley Custom Learning Solutions  
Williamsburg North  
Wilson Kehoe & Winingham  
Windsor Court  
WISH TV/COLTS FOOD DRIVE  
Wishard Hospital  
Woodlake Apartments  
WRTV Channel 6  
WTHR TV 13  
Xavier University  
Xerox Corporation  
Xscape  
Zimmer Custom Made Packaging

# FOOD REDISTRIBUTION PARTNERS

- Community Harvest Food Bank of Northeast Indiana
- Food Bank of Northern Indiana
- Food Bank of Northwest Indiana
- Food Finders Food Bank, Inc.
- Hoosier Hills Food Bank
- Human Services, Inc.
- Second Harvest Food Bank of East Central Indiana
- Southeastern Indiana Economic Opportunity Corporation
- Terre Haute Catholic Charities Food Bank
- Tri-State Food Bank

# VOLUNTEERS

Gleaners Food Bank of Indiana has nearly 50 employees, but the organization's real driving force is the thousands of volunteers who give their time and energy to feed fellow Hoosiers. **In 2010, 3,500 volunteers contributed 60,000 hours** — and more volunteers are needed every day. "Volunteers are very, very instrumental in helping us do what we do," said Cindy Hubert, president and chief executive officer. "They help us physically, but they also go out and broadcast the need and advance the mission."

Volunteers can choose from a variety of behind-the-scenes activities, such as packing food into backpacks for the BackSacks program, processing orders from partner agencies and sorting donations in the warehouse. More visible opportunities include staffing Gleaners' westside food pantry, coordinating special events and delivering food to low-income seniors through the government's Commodity Supplemental Food Program.

1st Mennonite Church  
 2nd Presbyterian Church  
 Accounts Management Group  
 Aces Power Marketing  
 AIMCO  
 Allison Transmission  
 Alpha Gamma Delta  
 Alpha Kappa Alpha  
 Archdiocese High School  
 AT&T  
 Bank of New York Mellon  
 Barb's In-charge Posse  
 BKD LLP  
 Blackmore & Buckner  
 Bonnett Group  
 Bound No More  
 Boy & Cub Scouts of  
 Brownsburg  
 Boy Scout Troop 199  
 Boy Scouts of America  
 Brownie Troop 134  
 Butler University  
 Caring Hands Camp  
 Castleton United Methodist Church  
 Cathedral High School  
 Celestial Star  
 Central Christian Church,  
 Lexington, KY  
 CH2M HILL  
 Charity Party Players  
 Charles Tindley School  
 Children's Bureau  
 Christ Fellowship Church  
 Chupp Group  
 Church Extensions  
 Church of the Latter Day Saints  
 Church of the Nazarene  
 Clarian Health Partners  
 Comcast  
 Crossroads Church  
 Cummins  
 Damar Services  
 Discover Properties  
 Duke Energy  
 Duke Realty  
 Eli Lilly  
 ELS English as a Second Language  
 Ernst & Young  
 Farm Bureau Insurance  
 FFA  
 First Call  
 First Internet Bank  
 Girl Scout Troop 2451  
 Girl Scout Troop 587  
 Girl Scouts of America  
 Global Repair Rolls-Royce  
 Golden Rule Insurance  
 Good News Mission



Employees from Grainger Industrial Supply not only volunteered their time at Gleaners, they held their trade show in our front office area, donating the display items to the food bank.

Goodwill Industries  
 Goodwill Senior Community Service  
 Employment Program  
 Grace Christian Church  
 Grainger Industrial Supplies  
 Gregory & Appel, Inc.  
 Heather Hills Baptist Church  
 Hendricks County Probation  
 Hershey Company  
 Holy Angels Catholic Church  
 Holy Trinity Church  
 Homeland Mission  
 Housing and Urban Development  
 Huntington Bank  
 ID Solutions  
 Imagine Charter School  
 IMPACT  
 Indian Christian Church  
 Indiana Men's Work Release  
 Indianapolis Hebrew Congregation  
 Indianapolis Power & Light  
 Company  
 Indianapolis University  
 Indy Badgers  
 IUPUI  
 IUPUI-Kelley School of Business  
 IUPUI-Nina Scholars  
 IUPUI-STEM Club  
 Ivy Tech  
 Jag IUPUI University  
 Johnson Controls  
 Kelly Business School  
 Key Learning Community  
 Kiwanis Club  
 Kiwanis International Eastside  
 Ladies Philoptochos Society  
 Leadership for Tomorrow  
 Liberty Mutual

Lifepoint Church  
 Little Bethel Baptist Church  
 Logicalis  
 Lutherwood Center  
 Lynhurst Middle School  
 M.O.M.S.  
 Macy's  
 Marian College  
 Marian University  
 Marion Co. Court 12 Community  
 Service  
 Marion County Community  
 Corrections  
 Martin University  
 Messiah Lutheran Church  
 Messiah Missionary Baptist  
 Church  
 Mt. Pleasant Baptist Church  
 National Society of Black Engi-  
 neers  
 New Business Development  
 Nifty Institute  
 Northview Christian Church  
 Old Girls Golf  
 One America Executives  
 One Brick Indy Chapter  
 Pacers Academy  
 Pacers Sports & Entertainment  
 Partners in Housing  
 Penn State Alumni  
 People 2 People  
 Pepsi  
 Pilgrim Missionary Baptist Church  
 Prologis  
 Reinhart Foods  
 Renaissance Club  
 RICOH Global  
 Rolls Royce Corporation

Rotary Club of Indianapolis  
 Sai Center  
 Sandor Development  
 SAP America, Inc.  
 Schwab Roche  
 Seimens  
 Shiel Sexton  
 Sigma Nu  
 Sikhcess  
 Singles with a Mission  
 St Jude Middle School  
 St. Jude Catholic Church  
 St. Monica Catholic Church  
 St. Richards School  
 St. Vincent Hospital  
 Taeda Phamacetal  
 Telecom  
 The Center for Inquiry  
 Trinity House  
 University of Indianapolis  
 University Place  
 Veterans Housing Authority  
 Vigo County Probation  
 Wabash Alumni  
 Wabash College  
 Warren Central High School  
 Warren Township Trustee's  
 Office  
 Washington Central High School  
 Washington Township Trustee  
 Weight Watchers  
 WellPoint  
 Westlake Christian Church  
 Westlake Community  
 Church of God  
 Wild Turkeys  
 Wishard Community Health  
 Women in Finance

# AGENCIES

## Agencies are “fingers” in Gleaners’ network

By Rosalyn Demaree For Custom Publications

Old Bethel Food Pantry (named Gleaners 2010 Agency of the Year) is among 350 agencies in 21 counties served by Gleaners Food Bank. “We have an excellent relationship with Gleaners,” said Ann Mead, one of the pantry’s leaders. The partnership was forged more than 10 years ago, making Old Bethel one of the longest-running Gleaners agencies. Most agencies in the network are food pantries; others are soup kitchens, halfway houses, emergency shelters and daycare centers.

### Bartholomew

Behavioral Health Organization of Indiana  
Community Center of Hope  
Developmental Services, Inc.  
Edinburgh Food Pantry  
First Presbyterian Church  
First United Methodist Church  
Human Services  
Love Chapel  
Salvation Army Columbus

### Boone

Indiana United Methodist Children’s Home  
Project Reach Out Preschool  
Zionsville Presbyterian Church

### Decatur

Human Services Decatur Co.  
Stapps Circle S Ranch  
Decatur County Family YMCA

### Fayette

Community Sharing Foundation  
Independent City Gospel Mission  
Landmark Services/Achieva  
Pentacostal Tabernacle  
Salvation Army Lord’s Table

### Hamilton

Fishers United Methodist Church  
Holy Spirit Parish at Geist  
Indiana Conference of Seventh Day Adventists  
Third Phase

### Hancock

Church 52 Family Worship Center  
Hancock County Food Pantry  
Helping Hands/Hunger Greenfield  
Kenneth Butler Memorial Soup Kitchen  
Little Miracles  
New Palestine Gridiron Alliance  
Northside Christian Church

### Hendricks

Bread of Life Church of God  
Danville Calvary Church of the Nazarene  
Jericho Society  
Kingsway Christian Church  
Light and Life Free Methodist  
Northview Homeless Outreach  
Plainfield Care Food Pantry  
St. Mark’s Episcopal Church  
Shared Blessings Community Food Pantry

### Jackson

Anchor House  
Community Provisions

### Jefferson

Calvary Baptist Church Pantry  
Christ Temple Community Church  
Fresh Start Home  
Hanover Baptist Church  
Hanover United Methodist Church  
Hungry Hearts Mission  
North Madison Christian Church  
Resurrection Lutheran Church  
Scalo House

### Jennings

Good Samaritan Food Pantry  
Jennings County Coordinating Council  
Senior Resource Center

### Johnson

Berean Baptist Church  
Indiana Baptist College  
Our Lady of Greenwood  
Vineyard Community Church  
Walls of Faith Mission

### Marion

Abundant Life World Outreach  
Ada’s Place  
Adorable Darling Tots  
Adult and Child Transitional Program  
Alpha Foundation for Youth  
Ambassador’s For Christ  
Another Light House Corporation  
Antioch Baptist Church  
Antioch Church  
Apostolic Social Services  
AYS, Inc. School 70  
AYS, Inc. School 91  
Barton Annex Resident Council  
Beech Grove Wesleyan Church  
Berean Baptist Church  
Bethel Family Worship Center  
Bethesda Temple  
Billie’s Food Pantry  
Blessed House of Prayer  
Bound No More Ministries  
Breeding Tabernacle  
Brookside Community Church  
Olive Branch  
One Step Two Steps, Inc  
One Way Apostolic Church



Old Bethel Food Pantry has benefited from Gleaners’ efficient new distribution center.

## AGENCIES (cont'd)

### Marion (cont'd)

Brotherhood Program of Concord  
Capitol City Seventh Day Adventists  
Caring and Sharing Mission  
Caring Neighbors  
Casa Mateo  
Cathedral Kitchen SVdP  
Cathedral of Praise  
Catholic Charities of Indianapolis  
Centenary Christian Church  
Center for Health & Human Services  
Centered Around Christ  
Central Christian Church  
Chapel Hill United Methodist  
Chapel Rock Christian Church  
Charity Chapel Baptist  
Charity Church Ministry  
Children of the Kingdom Daycare  
Children's Bureau  
Christ Church Apostolic  
Christ United Methodist Church  
Christian Unity Youth Camp  
Church of Acts  
Church of The Living God  
Church of the Lord Jesus Christ of Indianapolis  
Clarian Health Partners  
Community Action of Greater Indianapolis  
Community Alliance Far East Side  
Community Cupboard, Southwest  
Community Outreach Center  
Community Outreach Resource  
Compassion Temple Church of God in Christ  
Compassion Temple Daycare  
Concord Eagle Creek Homes  
Cornerstone Of Hope  
Crestwood Village West  
Dalton's Food Pantry  
Damien Center  
Deeper Life Christian Church  
Deliverance Tabernacle  
Destiny's Place  
Divine Help, Inc.  
Dove Recovery House for Women  
Eagle Creek Community Church  
East 10th United Methodist  
Eastern Star Church  
Ebenezer Baptist Church Rainbow House  
Edna Martin Center  
El Lirio De Los Valles  
Emmanuel Seventh Day Adventist  
Emmaus Food Pantry  
Fairbanks Hospital  
Faith Fellowship Apostolic  
Faith, Hope and Love Community  
Family Bible Church  
Fathers and Families Resource  
Fellowship Baptist Church  
Fervent Prayer  
First Baptist Church of Northern Indianapolis  
First Church of Deliverance  
First Free Methodist  
First Free Will Baptist Church  
First Samuel Missionary Baptist  
Food Link  
Forest Manor Multi-Service Center  
Forest Manor United Methodist Church  
Free Spirit Church of God  
Freetown Village  
Full Gospel Missionaries, Inc.

**“We distribute food through the fingers of our network,” says Carrie Petty, Gleaners current board chair. “We are a valuable safety net, especially for the kids.”**

Galilee Missionary Baptist  
Garden City School  
Garden Pantry  
Garfield Park Baptist Church  
Gateway West Neighborhood Association  
Glendale Seventh Day Adventist  
God's Full Blessings Food & Clothing Pantry  
Good Samaritan  
Goodnews Ministries  
Grace Missionary Baptist  
Great Harvest Food Pantry  
Greater Faith Church  
Greater Harvest Institutional Church  
Greater Morning Star Baptist Church  
Greater Mt. Calvary Apostolic Church  
Greater New Jerusalem  
Greater St. James Church  
Greater St. Mark's 5-Star Food Pantry  
Greenbriar AYS  
Harrison Hill Elementary School  
Hawthorne Community Center  
Ho2pe House  
Holy Cross Neighborhood Ministries  
Holy Ghost Hour Ministries  
Holy Trinity Food Pantry SVdP  
Hoosier Veterans Assistance Foundation  
Horizon Central Preschool  
Horizon House  
ICAN Food Pantry  
Iglesia Adventista Del Septimo Dia  
Iglesia Ebenezer  
Iglesia Pentecostal  
Immanuel House Of Prayer  
In God's Arms Childcare  
In His Hands Compassionate Ministries  
Indianapolis Black Firefighters Association  
Indianapolis Wesleyan Holiness  
Indy Dream Center  
Indy Kids  
Indy Naz Cares  
Indy Parks Brookside  
International Child Fund/Seventh Day Adventist Church  
International Ministries  
IPS School 14  
IPS School 15  
IPS School 27  
IPS School 46  
IPS School 51  
IPS School 54  
IPS School 93  
IPS School 94  
Jameson, Inc.  
Jerusalem Christian Church  
Jesus Fellowship Kidz Ministry  
Jesus Inside the Prison Ministry  
Jesus is the Truth Christian Church  
Jones Tabernacle AME Zion

Julian Center  
Jumpstart Change  
Kids of the Future Daycare  
Kingdom Of God Ministries  
Kingsley Terrace Church of Christ  
Lakeview Church  
Latino Community Foundation  
Lawrence Church of God  
Liberty Baptist Church  
LifeBridge Community  
Life's Transitions, Inc.  
Lighthouse Daycare Ministry  
Lil Touch of Love Daycare  
Linwood Christian Church  
Literacy Indiana, Inc.  
Little Babes Outreach Ministry  
Little Disciple of Christ  
Living Word Baptist Church  
Loaves & Fishes St. Timothy  
Lord's Kitchen  
Lord's Kitchen  
Lynhurst Baptist Church  
Maranatha 2/God's Temple  
Maranatha Ministries Inc.  
Martin Center Inc.  
Martin University  
Mary Rigg Neighborhood Center  
Matt Talbot House  
Mercyland Child Outreach  
Messiah Missionary Baptist Church  
Metropolitan High School  
Mid-North Food Pantry  
Missionary Connection Food Pantry  
MOM Project/Healthy Families  
Montessori Children's Garden  
Moziel Sanders Foundation  
Mt. Bethel Daycare Ministry  
Mt. Olive Missionary Baptist  
Mt. Pleasant Baptist Church  
Mt. Zion Apostolic Church  
Mt. Zion Baptist Church  
Nazarene Missionary Baptist  
New Beginning Assembly of God  
New Beginning Missionary Baptist  
New Beginnings Ministries  
New Bethel Baptist Church  
New Birth Ministries  
New Life Community Church  
New Life Manor  
New Life Restoration  
New Light Missionary Baptist Church  
New Westside Inc.  
Northwest United Methodist  
Northwood Christian Church  
Nursing Home Ministries  
Oasis of Hope Community Development Corporation  
Old Bethel UMC Community Outreach

# AGENCIES (cont'd)

## Marion (cont'd)

Partners in Housing  
Penick-Messiah AME Zion Church  
Philadelphia Apostolic Church  
Philadelphia Church SCOGIC  
Phillips Temple CME Church  
Pourhouse  
Praise Fellowship, Tiny Praises  
Precious Gifts Visionaries  
Prince of Peace  
Progress House  
Progressive Universal Life Church  
Project Love  
Promised Land Foundation Inc.  
Redeemer Hospitality  
Rev. Richard Hunter Ministries  
Ritter Avenue Free Methodist  
Robinson Community AME Church  
Rosie's Tiny Tots Ministry Inc  
Rowney Corporation  
Safe Haven Homes  
Salvation Army ARC  
Salvation Army Eagle Creek  
Salvation Army Fountain Square  
Salvation Army Harbor Lights  
Salvation Army Northwest Distribution  
Salvation Army Social Services  
Sanders Temple  
Saved to Serve Community Outreach  
Second Helpings, Inc.  
Second Moravian Church  
Servants Heart of Indy  
Seven Star Missionary Baptist  
Sharing Place  
Shiloh Missionary Baptist  
Smiley Childcare Center  
Soups on at Roberts Park Church  
Speedway General Baptist  
St. Christopher Catholic Church  
St. John's Storehouse  
St. Lawrence Conference SVdP  
St. Philip's Episcopal Church  
St. Thomas Aquinas SVdP  
St. Timothy Church of God  
Stout Field Elementary School  
SVdP Client Choice  
Tabernacle Missionary Baptist  
Tabernacle Presbyterian Church  
Take Time and Pray Church  
Takin It to the Streets  
TM Youth Development  
Total Praise & Worship Center  
TOUGH Program  
Train Up a Child Daycare  
Trinity CME Food Pantry  
Trinity Episcopal Outreach  
Trinity House  
Tuxedo Park Baptist Church  
UAW Local 98 Food Pantry  
UMOJA Christian Church Inc.  
United House of Prayer for All  
United Northwest Area  
United Way Of Central Indiana  
United Way/Sheet Metal #20  
Victory Inner-City Ministries  
Villages 10  
Vision of Hope

Visions Childcare  
Visions Inc.  
W.A.F.E.R.  
Wailing Women Win, Inc.  
Warriors in Christ Fellowship  
Watkins Park  
We Care Daycare  
Wellspring Fellowship  
We're Helping You! Inc.  
West Newton Worship and Youth Center  
Westminster Presbyterian Neighborhood Ministries  
Westside Pentacostal Church  
Wheeler Mission Center for Women & Children  
Wheeler Mission Ministries  
Who So Ever Will Pantry  
Women in Motion  
Women In Need Growing Strong  
Word of Faith Family Church  
Youth Industrial  
Zion Hill Missionary Baptist Church  
Zion Tabernacle Apostolic Faith Church

## Morgan

Churches In Mission  
Community Service Center/Wellspring  
First Church of the Nazarene  
Helping Hands Ministries Food Pantry  
Liberty Christian Church  
Martinsville Life Church of God  
Mooresville Church of God Food Pantry  
Morgantown Community Food Pantry  
Wellspring, Martinsville

## Putnam

Care Net Pregnancy Center  
New Providence  
Reach Ministries  
Victory Baptist Church

## Ripley

Care Net Pregnancy Center  
Ripley County Food Pantry  
Sunman Food Pantry

## Rush

Little Blue River Friends  
Ripley County Trustee Food Pantry

## Scott

Hope House  
Scott County Clearinghouse

## Shelby

Shelby County H S I

## Union

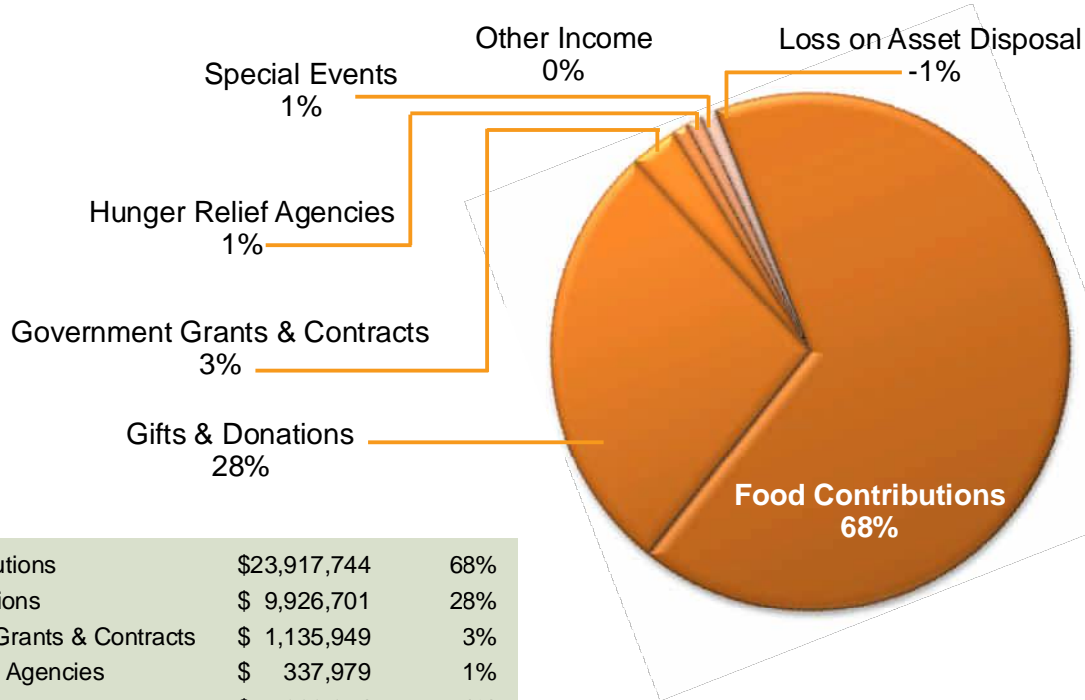
Christian Community Co-operative Closet

## Wayne

Abundant Life Church of God  
Birth to 5, Inc.  
Boys & Girls Club/Scott Unit  
Boys and Girls Clubs at Central  
Boys and Girls Clubs/Jeffers Unit  
Circle-U Help Center  
Concerned Citizens Food Bank  
First Baptist Church Centerville  
Gateway Church  
Genesis YWCA  
Helping Hands Richmond  
Holy Temple COGIC  
Community Food Pantry/Interfaith Missions  
Jackson Township Trustee  
Jefferson Township Trustee  
Living Faith Church  
Ministries of the Lamb  
Noah's Ark Daycare  
Richmond Covenant Life Ministries  
Richmond Community Food Pantry  
Richmond Dream Center  
Temple of God Pantry

One in eight Hoosiers gets assistance from a food bank affiliated with Feeding America, the national food bank network that includes Gleaners.

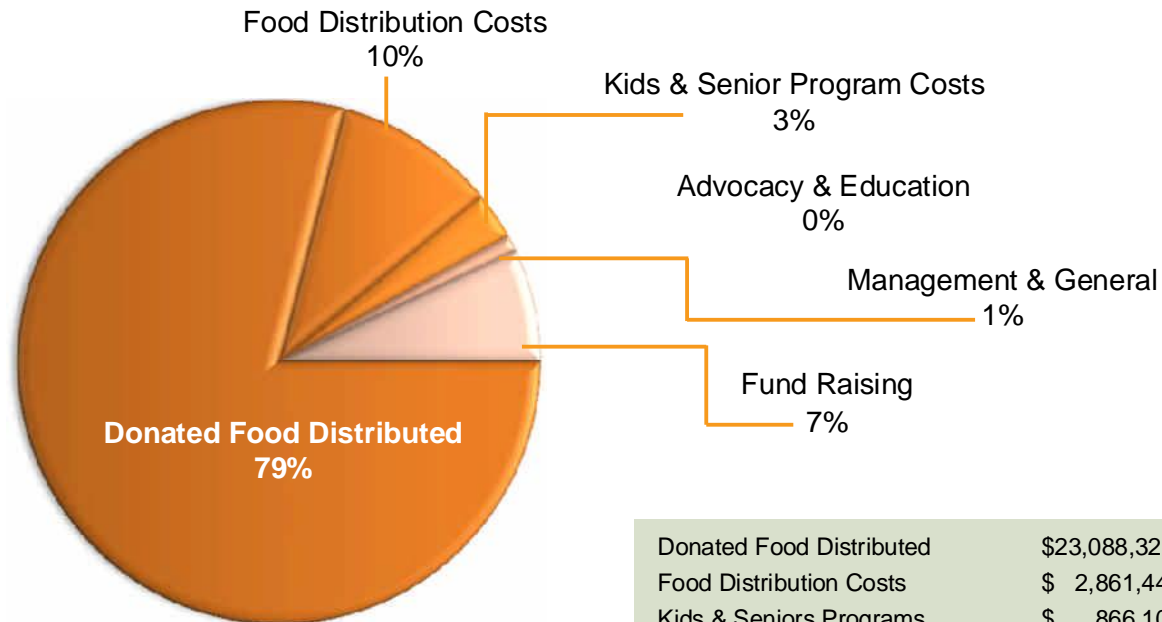
# INCOME



Food Contributions	\$23,917,744	68%
Gifts & Donations	\$ 9,926,701	28%
Government Grants & Contracts	\$ 1,135,949	3%
Hunger Relief Agencies	\$ 337,979	1%
Special Events	\$ 206,954	1%
Other Income	\$ 56,289	0%
Loss on Asset Disposal	(\$328,536)	-1%
<b>Total</b>	<b>\$35,253,080</b>	<b>100%</b>

	Unrestricted		Temporarily Restricted	Permanently Restricted	Year Ended	
	Value of Donated Food	Unrestricted Other			September 30, 2010	September 30, 2009
<b>REVENUES AND OTHER SUPPORT:</b>						
Government Grants & Contracts	\$ •	\$ 1,135,949	\$ •	\$ •	\$ 1,135,949	\$ 882,241
Hunger Relief Agencies	•	337,979	•	•	337,979	426,546
Gifts & Donations	•	4,358,501	5,568,200	•	9,926,701	8,002,692
Investment Income	•	20,721	•	•	20,721	74,244
Miscellaneous Income	•	24,546	•	•	24,546	36,207
Unrealized Gain (Loss) on Investments	•	735	•	10,287	11,022	(24,061)
Realized Gain (Loss) on Asset Disposal	•	(328,536)	•	•	(328,536)	1,531
Special Events	•	206,954	•	•	206,954	184,046
Net Assets Released from Restrictions	•	5,564,648	(5,564,648)	•	•	•
Total Revenues before Food Contributions	•	11,321,497	3,552	10,287	11,335,336	9,583,446
Food Contributions	23,917,744	•	•	•	23,917,744	21,984,568
<b>Total Revenues &amp; Other Support</b>	<b>\$23,917,744</b>	<b>\$11,321,497</b>	<b>\$ 3,552</b>	<b>\$ 10,287</b>	<b>\$35,253,080</b>	<b>\$31,568,014</b>

# EXPENSES



Donated Food Distributed	\$23,088,329	79%
Food Distribution Costs	\$ 2,861,441	10%
Kids & Seniors Programs	\$ 866,101	3%
Advocacy & Education	\$ 49,574	0%
Management & General	\$ 242,487	1%
Fund Raising	\$ 1,958,101	7%
<b>Total</b>	<b>\$29,066,033</b>	<b>100%</b>

	Unrestricted		Temporarily Restricted	Permanently Restricted	Year Ended	
	Value of Donated Food	Unrestricted Other			September 30, 2010	September 30, 2009
<b>EXPENSES:</b>						
Food Distribution Costs	\$ •	\$ 2,861,441	\$ •	\$ •	\$ 2,861,441	\$ 2,188,855
Kids & Seniors	•	866,101	•	•	866,101	634,055
Advocacy & Education	•	49,574	•	•	49,574	35,371
Management & General	•	242,487	•	•	242,487	224,362
Fund Raising (includes special events)	•	1,958,101	•	•	1,958,101	1,485,084
Expenses before Food Distributed	•	5,977,704	•	•	5,977,704	4,567,727
Donated Food Distributed	•	•	•	•	23,088,329	22,155,502
<b>Total Expenses</b>	<b>23,088,329</b>	<b>5,977,704</b>	<b>•</b>	<b>•</b>	<b>29,066,033</b>	<b>26,723,229</b>
<b>CHANGES IN NET ASSETS:</b>	829,415	5,343,793	3,552	10,287	6,187,047	4,844,785
Beginning of year	3,123,876	8,302,530	494,274	77,062	11,997,742	7,152,957
End of year - Exhibit A	\$ 3,953,291	\$13,646,323	\$ 497,826	\$ 87,349	\$18,184,789	\$11,997,742

# WHO'S WHO

## BOARD OF DIRECTORS

2009-2010

### OFFICERS

#### Chairperson

**RONALD E. TALBOT**  
Senior VP, Power Supply  
Indianapolis Power & Light Co.

#### Chair-Elect

**CARRIE PETTY**  
Vice President  
Petty Custom Homes

#### Secretary

**MARTY DuRALL, MBA, SPHR**  
Exec. Dir., Human Resources  
St. Vincent Indianapolis Hospital

#### Treasurer

**ROBERT HERZOG**  
VP of Finance &  
Chief Financial Officer  
Educational Management Corp.  
Harrison College

### OFFICERS (cont'd)

#### Immediate Past Chair

**BRAD HASTINGS**  
SVP of Business Development  
Tippmann Group/Interstate  
Warehousing

### MEMBERS

**RABBI JON ADLAND**  
Community Volunteer

**MARK APPLE**  
Associate Director of Public  
Relations  
Harrison College

**GREG BEYERL**  
President  
Sign Craft

**KAREN BOHN**  
Nurse Practitioner  
Integrative Health

**JAMES BROWNING**  
Vice President Real Estate  
Development  
Browning

**MARILYN BURGER**  
Community Volunteer

**BRENT S. CLAYMON**  
Principal  
Park Place Motors

**STACY FLANIGAN, CTP**  
Senior Vice President  
Treasury Management Sales  
M&I Bank

**JOHN T.L. KOENIG**  
Partner  
Barnes & Thornburg

**CATHERINE M. La-CROSSE**  
Senior Vice President,  
Development & Fine Wines  
National Wine & Spirits Corp.

**MIKE LEE**  
C.P.A./Partner  
Katz, Sapper & Miller, LLP

**JAY B. LOVE**  
CEO  
Social Solutions

**ROBERT MOEDER**  
President Central Division  
The Kroger Company

**LORRAINE N. ORTIZ**  
Director of Human Resources  
MCL Cafeterias

**BERNIE ROY**  
Quality Systems Manager  
Coca-Cola Enterprises

**KIRK STAHL**  
Executive Vice President  
Publicis Indianapolis

**LAURINDA SWANK**  
SVP & Chief Financial Officer  
First Internet Bank of Indiana

**JOHN T. WORTMAN,**  
CFP, Financial Advisor  
Valeo Financial Advisors, LLC

## STAFF

As of April 1, 2011

**President and CEO**  
Cynthia Hubert

**COO**  
Michael Miller

**Director of Development**  
Peggy Wulff Blackard,  
CFRE

**Warehouse Operations Manager**  
Marty Dickerson

**Facilities Manager**  
Robert Sowell

**Fiscal Officer**  
Annette Baker, CPS

**Programs Manager**  
Rebecca Hersey

**Major Gifts Manager**  
Robert Wilson, GPC

Ross Berry  
Darren Boyd  
Betsy Breeden  
Steve Carter  
Tracy Clay  
Zachary Cobb  
Clifton Cummins  
Lydia Dossey  
Lamont DuBose  
Bob Evans  
Jayne Evans  
Rachel Frohberg  
Carrie Fulbright  
John Gartrell  
Vivian Gill  
Dave Haerle  
Derrick Hampton  
James Ingram  
Retilien Janvier  
Georgia Jones  
Kathy Hahn Keiner

Dan Kinser  
Julie Koch  
Janie Lafferty  
Diana Lahmann  
Terryon LeFlore  
Precious Longo  
Jim Meyers  
Kevin Owens  
Torrence Penn  
Sa'ane Poston  
Alicia Ray  
Sloan Shockley  
Dave Snell  
Becky Voelz  
Claudea Voyles  
Todd Willing  
Debbie Wilson  
Dave Wingo

## 2010 Award Winners



**Donor of the Year**  
Publicis Indianapolis

**Food Donor of the Year**  
Treat America Food Services

**Charity of the Year**  
Old Bethel Community Outreach

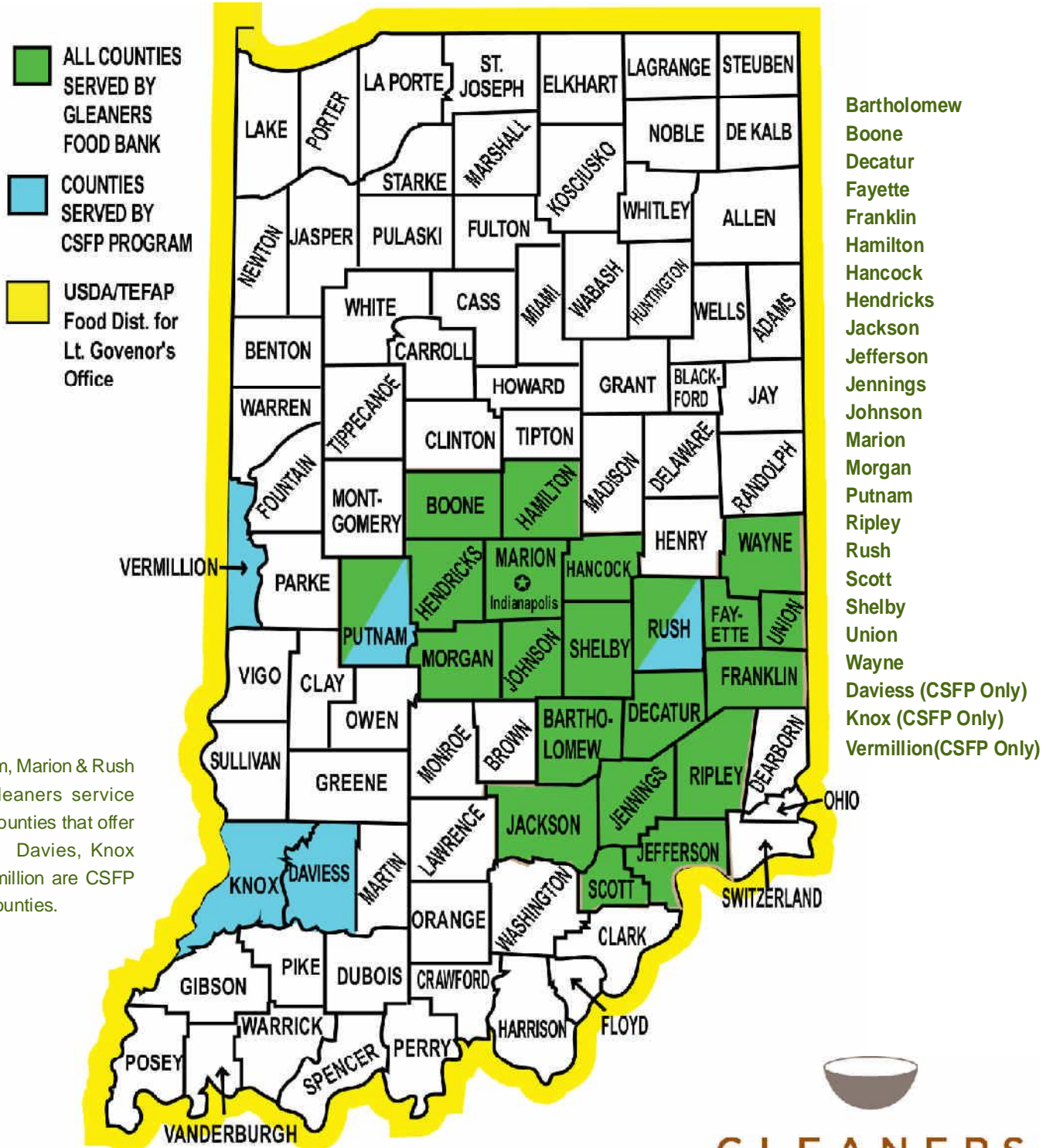
**Volunteer of the Year**  
Goodwill Industries of Central Indiana

**Community Spirit Award**  
Westlake Community Church of God

**Robert McFarling Award**  
Interstate Warehousing/Tippmann Group

# COUNTIES SERVED

Gleaners serves agencies in 21 counties located in central and southeastern Indiana, plus three additional counties through the Commodity Supplemental Food Program (CSFP).



Putnam, Marion & Rush are Gleaners service area counties that offer CSFP. Daviess, Knox & Vermillion are CSFP only counties.

# UNTIL EVERY BOWL IS FILLED

For more information write or call...  
**GLEANERS FOOD BANK OF INDIANA, INC.**  
3737 Waldemere Ave. • Indianapolis, IN 46241  
gleaners.org • gleaners@gleaners.org  
317-925-0191 • 800-944-9166

*We wish to thank Custom Publications, a division of Star Media, for use of their stories, articles and photos.*

