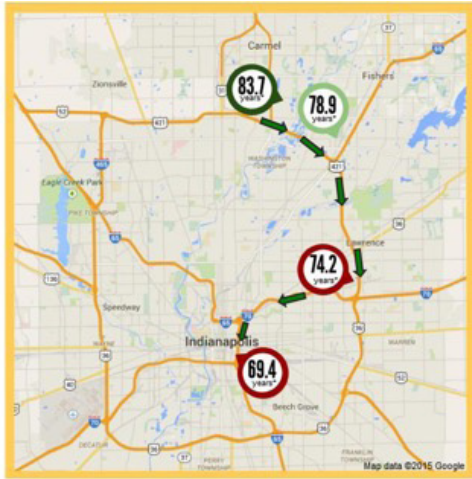


Hunger & Health

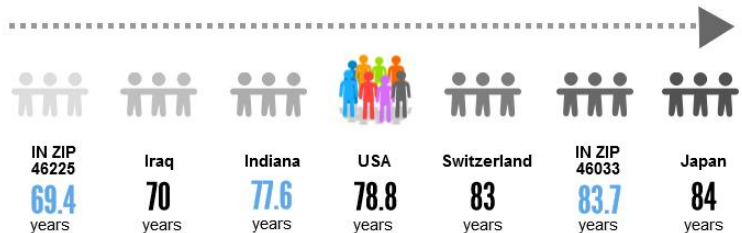
TIME FOR CREATIVE INTERVENTION

Life Expectancy in Hamilton & Marion Counties

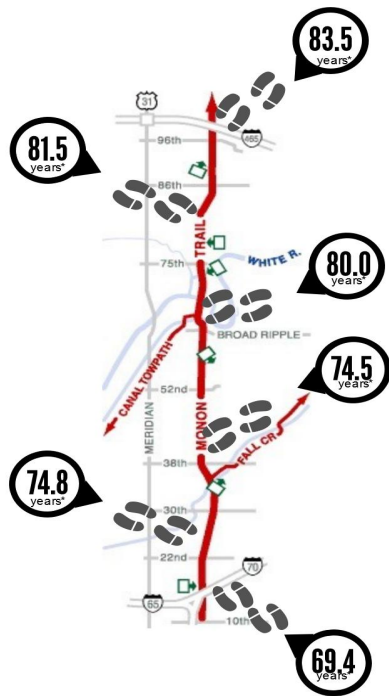


28 miles. 14 years. Worlds Apart.

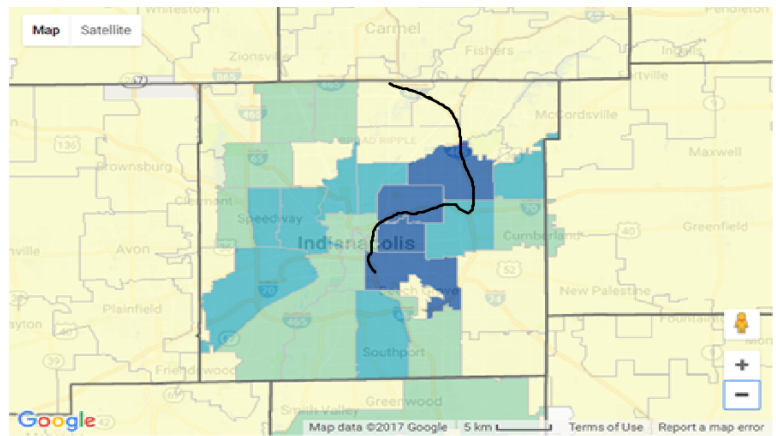
In Hamilton County, the average life expectancy is 83.7 years. However, just 28 miles south in Indianapolis, the average life expectancy is 69.4 years.



Life Expectancy on the Monon Trail



2016 Total 211 Call Needs for Year about Food/Meals by ZIP Codes



Barriers to eating a nutritious diet

- Access
- Abundance of unhealthy options
- Cost imbalance
- Marketing
- Exposure
- Cooking knowledge
- Food Insecurity

Hunger & Health

TIME FOR CREATIVE INTERVENTION

Marion County

2016 Population: 941,229

Indiana is home to 93 health departments serving an estimated 6.6 million people. County health departments prevent epidemics and the spread of disease, protect against environmental hazards, prevent injuries, promote healthy behaviors and mental health, respond to disasters, assist communities in recovery, and work to create opportunities for all Hoosiers to lead healthy lives.

Race/Ethnicity	Description	Percent	State	
White (non-Hispanic)	¹ Percentage of population that is non-Hispanic White, 2014	57.9%	80.3%	
African American (non-Hispanic)	¹ Percentage of population that is non-Hispanic African American, 2014	27.1%	9.2%	
Hispanic or Latino Origin	¹ Percentage of population that is Hispanic, 2014	9.8%	6.6%	
Other Races	¹ Percentage of population that is Asian, American Indian, Alaskan Native, or Native Hawaiian/Pacific Islander, 2014	3.2%	2.5%	
Social, Economic, and Environmental Factors	Description	County	Quartile	State
Median Household Income	² The income at which half the households earn more and half the households earn less, 2014	\$42,700	4-BOTTOM	\$48,737
% Unemployment (Adult)	² Percentage of the civilian labor force, age 16+, 2015	5.0%	3-MIDDLE	4.8%
% Food Insecurity	¹ Percentage of population who lack adequate access to food, 2013	19%	4-BOTTOM	15%
% Children in Poverty	¹ Percentage of children under age 18 in poverty, 2014	31%	4-BOTTOM	21%
Health Indicators	Description	County	Quartile	State
Life Expectancy, Women	³ Estimated female life expectancy at birth (years), 2014	78.7	4-BOTTOM	80.0
Life Expectancy, Men	³ Estimated male life expectancy at birth (years), 2014	73.5	4-BOTTOM	75.3
Drug Overdose Death Rate	⁴ Drug poisoning deaths per 100,000 population, 2012-2015	23.8	4-BOTTOM	17.9
Access to Care	Description	County	Quartile	State
Primary Care Physicians Ratio	¹ Ratio of population to primary care physicians, 2013	1,253:1	1-TOP	1,490:1
Mental Health Providers Ratio	¹ Ratio of population to mental health providers, 2015	415:1	1-TOP	710:1
Health Care Costs	¹ Amount of price-adjusted Medicare reimbursements per enrollee, 2013	\$9,643	N/A	\$9,753
Health Behaviors	Description	County	Quartile	State
% Adult Obesity	¹ Percentage of adults that report a BMI \geq 30, 2013	32%	2-MIDDLE	32%
% Adult Physical Inactivity	¹ Percentage of leisure-time physical inactivity, age-adjusted, 20+, 2013	26%	2-MIDDLE	27%
% Adult Smokers	¹ Percentage of adults (18+) who are current smokers, 2014	22%	3-MIDDLE	23%
% Youth Smokers	⁵ Percentage of middle and high school students who were current tobacco users, 2012-2013	Indiana: 11.7%, National Average: 7% <i>no county level data available</i>		
% Adult Excessive Drinking	¹ Percentage of adults reporting binge or heavy drinking, 2014	16%	2-MIDDLE	16%

Sources:

- 1 County Health Rankings & Roadmaps, Indiana. Robert Wood Johnson Foundation. 2017. Retrieved from: <http://www.countyhealthrankings.org/app/indiana/2016/overview>
- 2 Interactive Atlas. Center for Disease Control and Prevention. 2017. Retrieved from: <https://nccd.cdc.gov/dhdsptatlas/reports.aspx?geographyType=state&state=IN#report>
- 3 US County Profiles. Institute for Health Metrics and Evaluation. University of Washington. 2017. Retrieved from: <http://www.healthdata.org/us-county-profiles>
- 4 Indiana State Department of Health. Retrieved from <http://www.in.gov/isdh/>
- 5 Chronic Disease and Health Promotion Data & Indicators. Center for Disease Control and Prevention. 2017. Retrieved from: <https://chronicdata.cdc.gov/Survey-Data/Youth-Risk-Behavioral-Surveillance-System-YRBSS-Da/3596-ayf6>

How we used quartiles. The quartiles provide a comparison between Indiana counties. In all categories, Quartile 1 is the best quartile. For example, on an indicator such as unemployment, a county classified as Quartile 1 has among the lowest unemployment rate in the state. Each quartile is assigned according to the distribution of all values recorded for each individual indicator. Quartile 1 is the top 25% of counties, or counties with 75% to 100% performance. Quartile 4 contains counties in the bottom 25% of performers for each indicator. Quartile 2 and 3 are classified as middle quartiles representing 50-75% and 25-50% respectively.

